



Making Healthcare Safer for All Californians

Healthcare-Associated Infections in California Hospitals
Annual Report | January to December 2022

Report to the Legislature and the People of California
by the Healthcare-Associated Infections Program,
Center for Health Care Quality,
California Department of Public Health | September 2023

Healthcare-Associated Infections Program
Center for Health Care Quality
California Department of Public Health
850 Marina Bay Parkway, Building E
Richmond, California 94804
Phone: 510-412-6060
Email: HAIProgram@cdph.ca.gov
Website: www.cdph.ca.gov/hai

Table of Contents

Message from the Chief of the Healthcare-Associated Infections Program	4
Acknowledgements	5
Executive Summary	6
Annual Report	8
Methods	8
Key Findings	11
HAI Prevention Progress in Individual Hospitals	15
Long-Term Acute Care (LTAC) Hospitals	20
Critical Access Hospitals	23
Rehabilitation Hospitals and Units	25
Public Health Action	27
References.....	28
Appendix A. California General Acute Care Hospitals with Incomplete Reporting of Healthcare-Associated Infections Data in 2022.....	29
Appendix B. California Hospitals with Healthcare-Associated Infection Incidence Better or Worse than National Baseline or Statewide Pooled Average Rate, 2022	30
Appendix C. California Hospitals with Surgical Site Infection Incidence Better or Worse than National Baseline, 2022	37
Appendix D. Summary: Comparison of CLABSI Data from California Hospitals Before and During Pandemic Periods.....	42
Appendix E. Antimicrobial Stewardship Program Honor Roll Members.....	54

MESSAGE FROM THE CHIEF OF THE HEALTHCARE-ASSOCIATED INFECTIONS (HAI) PROGRAM

Although California hospitals made some overall progress reducing healthcare-associated infection (HAI) incidence in 2022, ongoing efforts are necessary to facilitate HAI reductions across all hospital types and ensure the sustainability of further prevention progress. Following substantial increases in 2020, statewide incidence for central line-associated bloodstream infections (CLABSI) and methicillin-resistant *Staphylococcus aureus* bloodstream infections (MRSA BSI) decreased between 2021 and 2022, but they remained higher than in 2019. In long-term acute care (LTAC) hospitals, CLABSI, MRSA BSI, and vancomycin-resistant *Enterococci* (VRE) BSI incidence all continued to increase since 2020.

With additional Centers for Disease Control and Prevention (CDC) Epidemiology and Laboratory Capacity (ELC) funding for Strengthening HAI/AR Programs (SHARP) awarded in October 2021, the HAI Program resumed and expanded our statewide and regional HAI and antimicrobial resistance (AR) prevention initiatives in 2022. To ensure the quality and consistency of hospital HAI surveillance practices and publicly reported data used to inform and track HAI prevention progress, the HAI Program resumed routine annual HAI data validation exercises with hospitals. We convened a CLABSI reduction initiative with more than 30 hospitals, and prioritized LTAC engagement for AR response and prevention, including antimicrobial stewardship.

As part of CDPH's commitment to reducing health disparities experienced by vulnerable communities in California, the HAI Program began developing health-equity focused initiatives across all program areas, including analyses examining the relationship between social determinants of health and HAI/AR outcomes in hospitals. CDPH also continues to engage the California HAI Advisory Committee and other hospital partners to identify and support implementation of strategies for maintaining resilience in hospital IPC practices while managing ongoing and future stressors.

Erin Epton, MD
Medical Director & Chief
Healthcare-Associated Infections Program
Center for Health Care Quality

ACKNOWLEDGEMENTS

The HAI Program would like to recognize the contributions of California hospitals that diligently track and report HAI data using the National Healthcare Safety Network protocols and definitions and for their continued dedication to ensuring the accuracy of the data used to produce this public report.

HAI Advisory Committee

The HAI Program Advisory Committee makes recommendations to CDPH on issues related to HAI surveillance, reporting, and prevention in California hospitals. The HAI Advisory Committee is comprised of voting members with HAI expertise or interest and non-voting liaison members who represent California HAI stakeholder organizations. The HAI Program thanks each member for their support and contributions.

Members

Anjali Bisht, MPH, CIC, CLSGB

Carolyn Caughell, RN, MSN, CIC, FAPIC

Deborah Ellis, PhD, MSPH, CIC

Robert Enteen, Ph.D

David HA, PharmD, BCIDP

Michele Lampshire, RN, BSN, CIC

Ariana Longley, MPH

Carole Moss

Zachary Rubin, MD

Geany Ryan, RN, MSN, NP

Jorge Salinas, MD

Ethan Smith, PharmD, BCIDP

Patricia Sung, MPH, CIC

Amber Theel, BSN, MBA, CPHRM, CPHQ

Francesca Torriani, MD, FIDSA, AAHIVS

Michael Vollmer, MD

Liaison Members

Michael Butera, MD, California Medical Association

Kathy Dennis, RN, California Nurses Association

Trina Gonzalez, MPP, California Hospital Association

Louise McNitt, MD, California Association for Professionals in Infection Control and Epidemiology

Howard Pitluk, MD, MPH, FACS, Health Services Advisory Group (HSAG) of California

Jeffrey Silvers, MD, Infectious Disease Association of California

EXECUTIVE SUMMARY

The California Department of Public Health (CDPH) publishes healthcare-associated infections (HAI) data annually to provide information about the quality of hospital care and to monitor prevention progress (Health and Safety Code (HSC) section 1288.55). This report presents California hospital HAI data for calendar year 2022. CDPH published all reported HAI numerator, denominator, and incidence data for 2022 on the California Health and Human Services (CHHS) Open Data Portal.

In 2022, 397 California general acute care hospitals reported 246 fewer central line-associated bloodstream infections (CLABSI), 25 fewer methicillin-resistant *Staphylococcus*

aureus (MRSA) bloodstream infections (BSI), 156 more vancomycin-resistant Enterococci (VRE) BSI, 160 fewer *Clostridioides difficile* infections (CDI), and 296 more surgical site infections (SSI) than were reported in 2021.

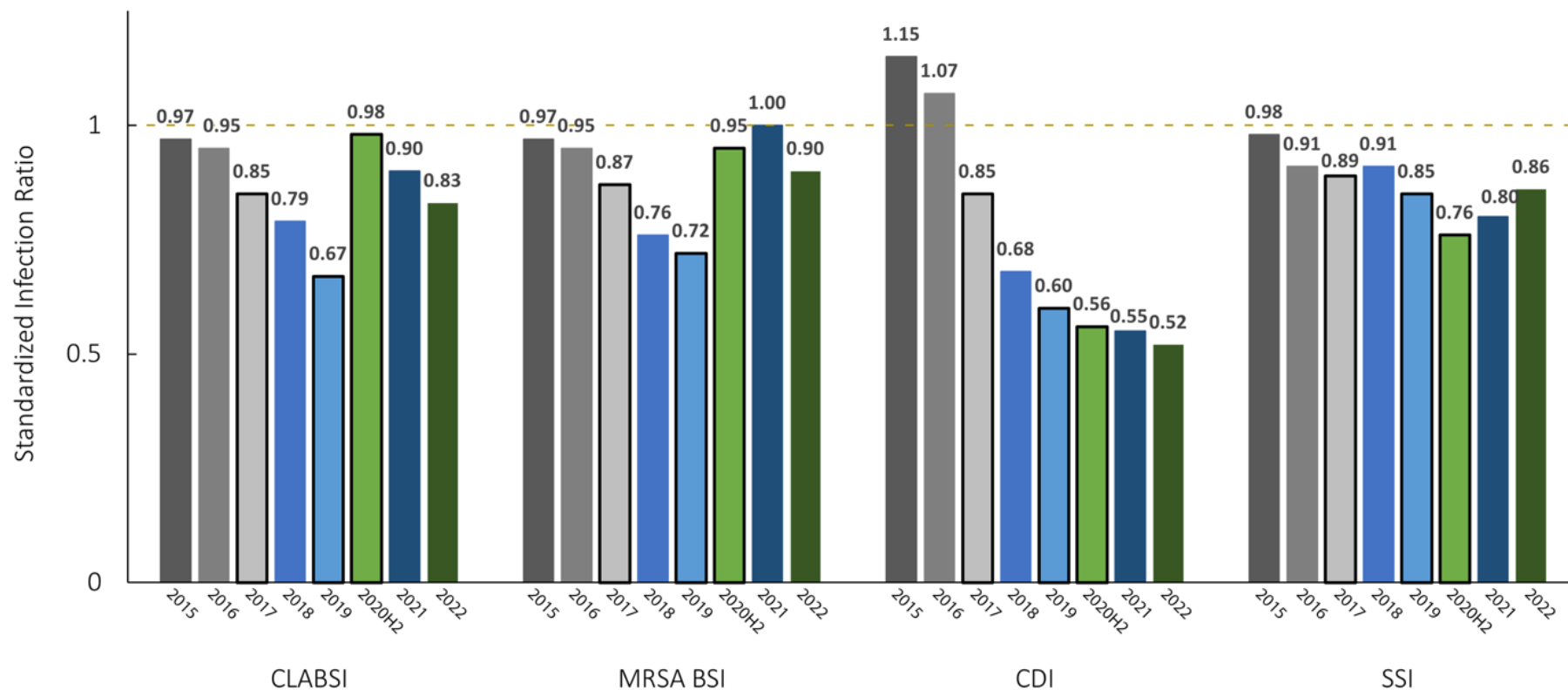
After steep increases in risk-adjusted incidence from 2019 to the second half of 2020, CLABSI and MRSA BSI risk adjusted incidence declined between 2021 and 2022. (Figure 1). However, CLABSI and MRSA BSI risk adjusted incidence remain higher than 2019 and the 2020 national targets.

VRE BSI is the least common of the five HAI types included in this report, but incidence rates have increased in both Acute care

hospitals and long-term acute care hospitals from 2021 to 2022. Because the National Healthcare Safety Network (NHSN) has not released a risk adjustment model for VRE BSI, it is unclear if this change in incidence is due to a change in the risk profile of the patient population.

Adjusted adult surgical site infection risk reached its lowest point since 2015 in the latter half of 2020, then rose in both 2021 and 2022. Adjusted SSI risk has never met the 2020 national target.

Figure 1. Healthcare-Associated Infection Incidence in California Hospitals, 2015-2022



Note: Dashed horizontal line reflects the national baseline for the standardized infection ratio (SIR). An SIR below the dashed line represents HAI prevention progress if the reduction was statistically significant. 2020H2 bar presents SIR for the latter six months of 2020.

ANNUAL REPORT

Patients in hospitals are exposed to invasive devices, procedures, and medications that put them at risk for **healthcare-associated infections (HAI)**. Most HAI can be prevented if health care providers and staff consistently adhere to infection prevention care practices [1].

This report provides an annual summary of HAI data reported by California hospitals to CDPH, in accordance with Health and Safety Code sections 1288.5 and 1288.55.

METHODS

California acute care hospitals track and report to CDPH five types of hospital-onset infections (Health and Safety Code section 1288.55):

Central line-associated bloodstream infections (CLABSI), methicillin-resistant *Staphylococcus aureus* (MRSA) bloodstream infections (BSI), vancomycin-resistant enterococci (VRE) BSI, *Clostridioides difficile* infections (CDI), and surgical site infections (SSI).

This report summarizes HAI data reported to CDPH via the Centers for Disease Control and Prevention (CDC) National Healthcare Safety Network (NHSN).

In 2022, operational facilities that were mandated to report HAI data to CDPH data included 327 acute care hospitals (including 203 community, 114 major teaching, and 10 pediatric acute care hospitals), 22 long-term acute care (LTAC) hospitals, 36 critical access hospitals, and 12 acute care rehabilitation hospitals. CDPH reports the 2022 HAI data from LTAC, critical access, and rehabilitation hospitals in separate sections of this report because risk-adjustment methods are different for each hospital type.

Fourteen (4%) California general acute care hospitals did not report complete HAI data for 2022 (Appendix A).

CDPH calculates and presents comparative measures of HAI incidence and risk based on national referent data (baselines) to track California hospital HAI prevention progress from year to year [2]. When available, CDPH reports HAI incidence using a measure called the **standardized infection ratio (SIR)**. The SIR is calculated by comparing the number of HAI that were reported by the hospital with the number of HAI that were predicted using

2015 national baseline data [3]. The predicted number of infections is determined by a risk adjustment process that accounts for differences in hospital and patient characteristics.

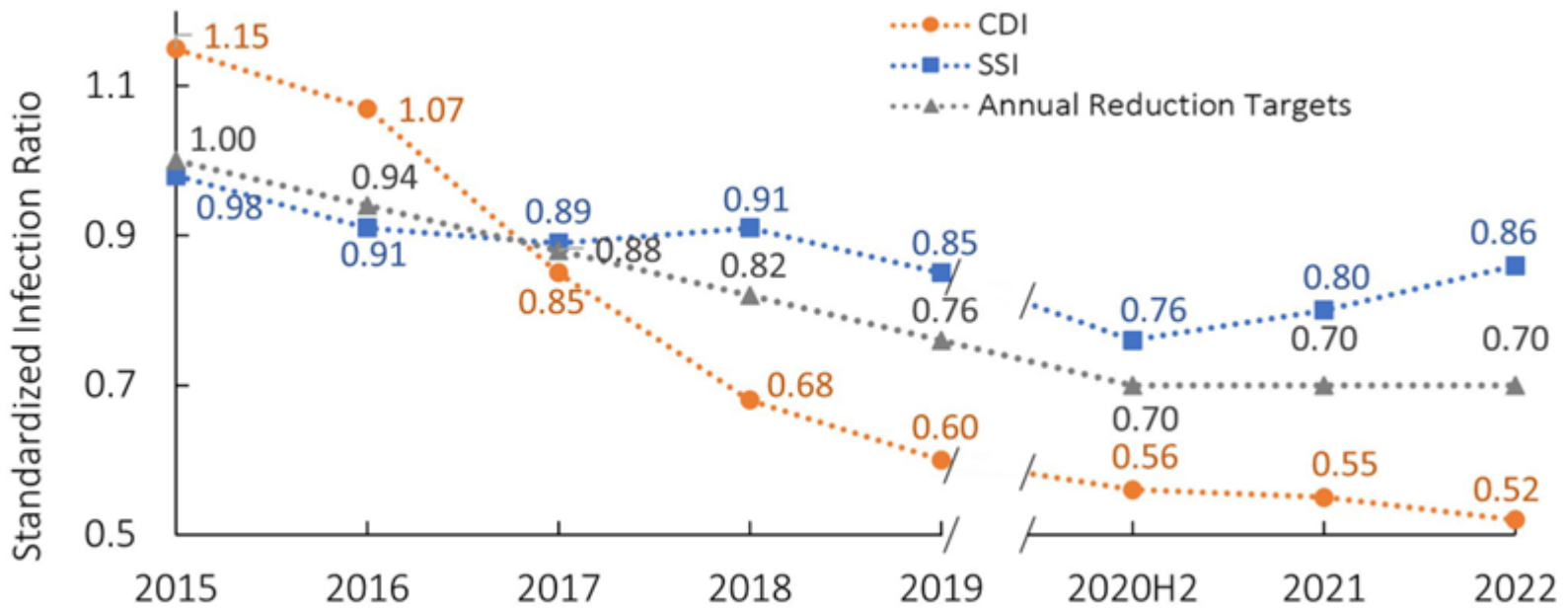
CDPH presents VRE BSI incidence as rates (per 10,000 patient days) because a risk adjustment model and SIR are not available. Readers should be aware that these incidence rates do not account for differing patient mix between individual hospitals of the same facility type.

In 2015, the California HAI Advisory Committee recommended that CDPH track each hospital's progress towards national HAI reduction goals [4]. From 2015 to 2020, all California hospitals were expected to achieve 50% reductions in CLABSI and MRSA BSI incidence and 30% reduction in CDI and SSI. To have met the 2020 HAI reduction goals, hospitals had to achieve SIRs at or below incremental targets each year (Figures 2 and 3). Because updated U.S. Health and Human Services (HHS) [HAI reduction targets](https://www.hhs.gov/oidp/topics/health-care-associated-infections/hai-action-plan/index.html) are not yet available (www.hhs.gov/oidp/topics/health-care-associated-infections/hai-action-plan/index.html), CDPH continued using the 2020 HAI reduction goals to determine whether individual hospitals met

those goals in 2022.

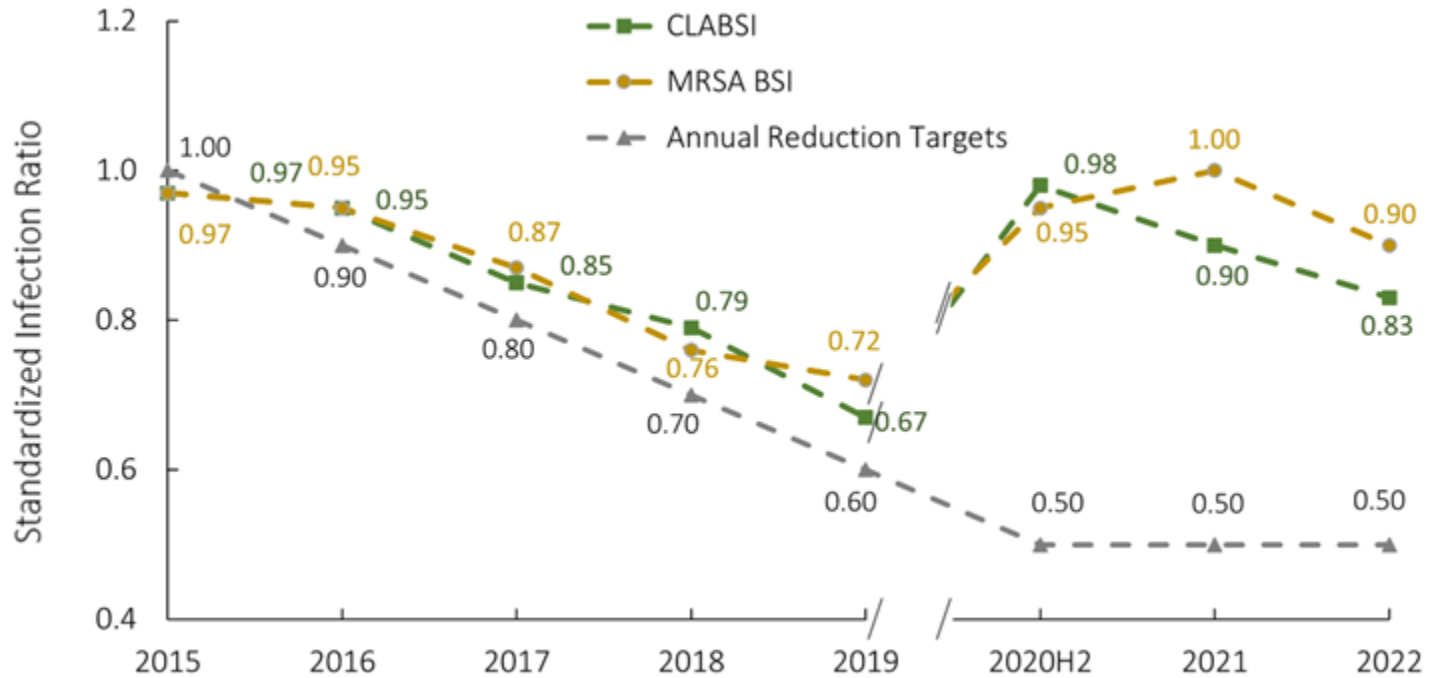
Figures 2 and 3. Standardized Infection Ratio (SIR) Targeted Reduction Goals by Year, HAI Infection Type, and Progress to Date among California Hospitals

Figure 2



Note: 2020H2 denotes the latter six months of 2020

Figure 3



Note: 2020H2 denotes the latter six months of 2020

CDPH publishes annual HAI findings on its [website](http://www.cdph.ca.gov/HAI) (www.cdph.ca.gov/HAI). The webpage includes this report and two-page HAI profiles for each California hospital. The profiles show detailed HAI data reported in 2022 and graphs of annual infection trends since 2015. The profiles are

also available via the CDPH interactive map, “[My Hospital’s Infections](http://www.cdph.ca.gov/Programs/CHCQ/HAI/Pages/HAImap.aspx)” (www.cdph.ca.gov/Programs/CHCQ/HAI/Pages/HAImap.aspx).

All HAI hospital-specific data tables are available for viewing or downloading at the California Health and Human Services [Open](#)

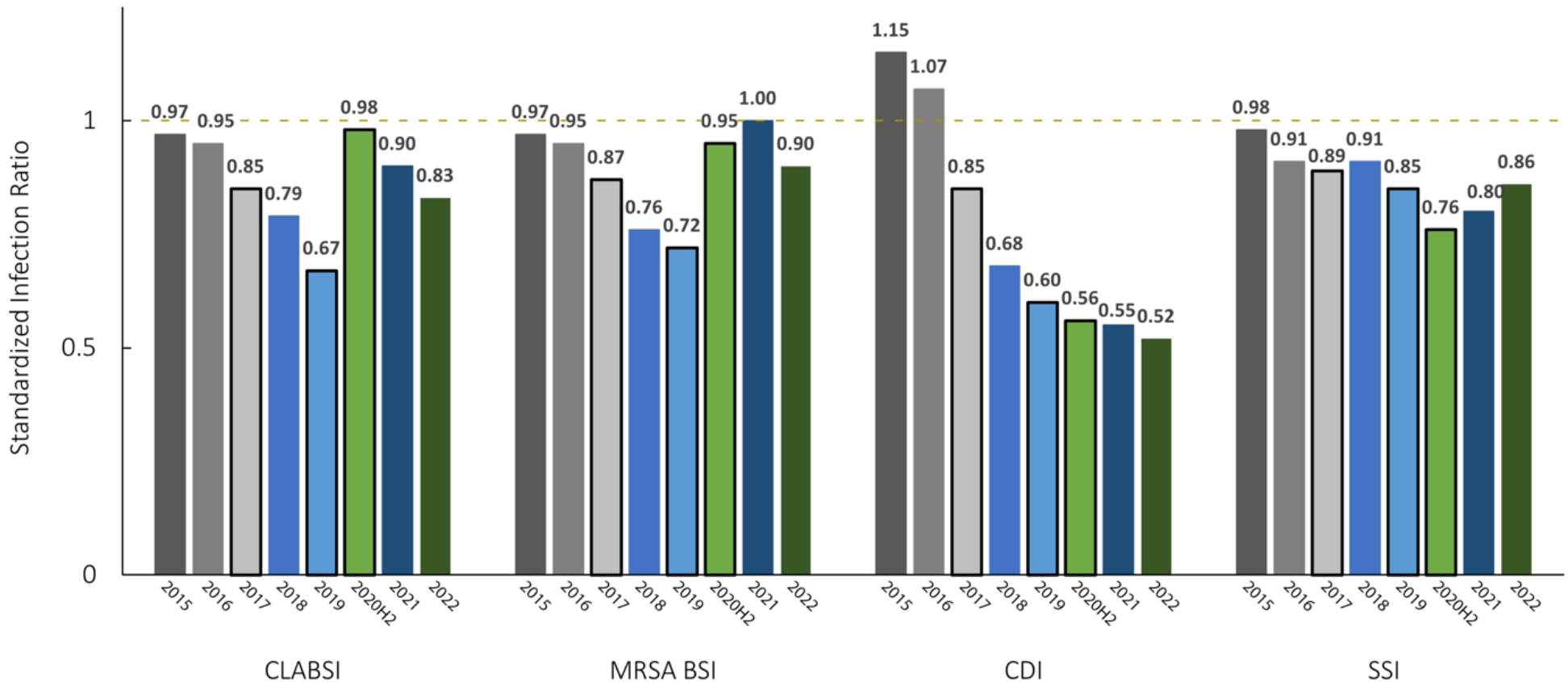
[Data Portal](http://data.chhs.ca.gov) (data.chhs.ca.gov).

The Key Findings section of this report presents HAI data for California acute care hospitals for CLABSI, MRSA BSI, CDI, and VRE BSI. Reporting for SSI is not stratified by hospital type.

KEY FINDINGS

The statewide SIRs for CDI, CLABSI, MRSA BSI, and SSI are significantly lower or better than 2015 national baselines (Figure 1). Hospitals reported 253 fewer CLABSI, 56 fewer MRSA BSI, 118 fewer CDI, 294 more adult SSI, and 144 more VRE BSI in 2022 than in 2021. The incidence across all HAI types is different in 2022 than 2021 (Table 1).

Figure 1. Healthcare-Associated Infection Incidence in California Hospitals, 2015-2022



Note: Dashed horizontal line reflects the national baseline for the standardized infection ratio (SIR). An SIR below the dashed line represents HAI prevention progress if the reduction was statistically significant. 2020H2 bar presents SIR for the latter six months of 2020.

Table 1. HAI Incidence in Acute Care Hospitals for the Year, 2021 Versus 2022

HAI Type	2022 SIR* or Rate**	2021 SIR* or Rate**	P-value
CLABSI	0.83	0.90	0.005
CDI	0.52	0.55	0.017
MRSA BSI	0.90	1.00	0.019
VRE BSI	0.41**	0.34**	0.0004
SSI†	0.86	0.80	0.002

*Standardized infection ratio; **Incidence density rate per 10,000 patient days; †All adult surgical procedures; Notes: The data from LTAC, CAH, and rehabilitation hospitals and units are not included for CLABSI, CDI, MRSA BSI, and VRE BSI; P-values calculated by SAS (“mid-p”).

CLABSI

In 2022, hospitals reported 2,330 infections, 253 (10%) fewer infections than reported in

2021. The CLABSI statewide SIR (0.83) decreased by 8% since 2021. Hospitals would have needed to prevent 929 infections in the same patient population to meet the 2020 reduction goal in 2022.

MRSA BSI

Hospitals reported 836 MRSA BSI, 56 fewer infections than 2021. The statewide SIR among hospitals was 0.90, which decreased by 10% since 2021 and is the better than the 2015 national baseline. To meet the 2020 prevention goal, hospitals would have needed to prevent 370 infections in the same patient population.

VRE BSI

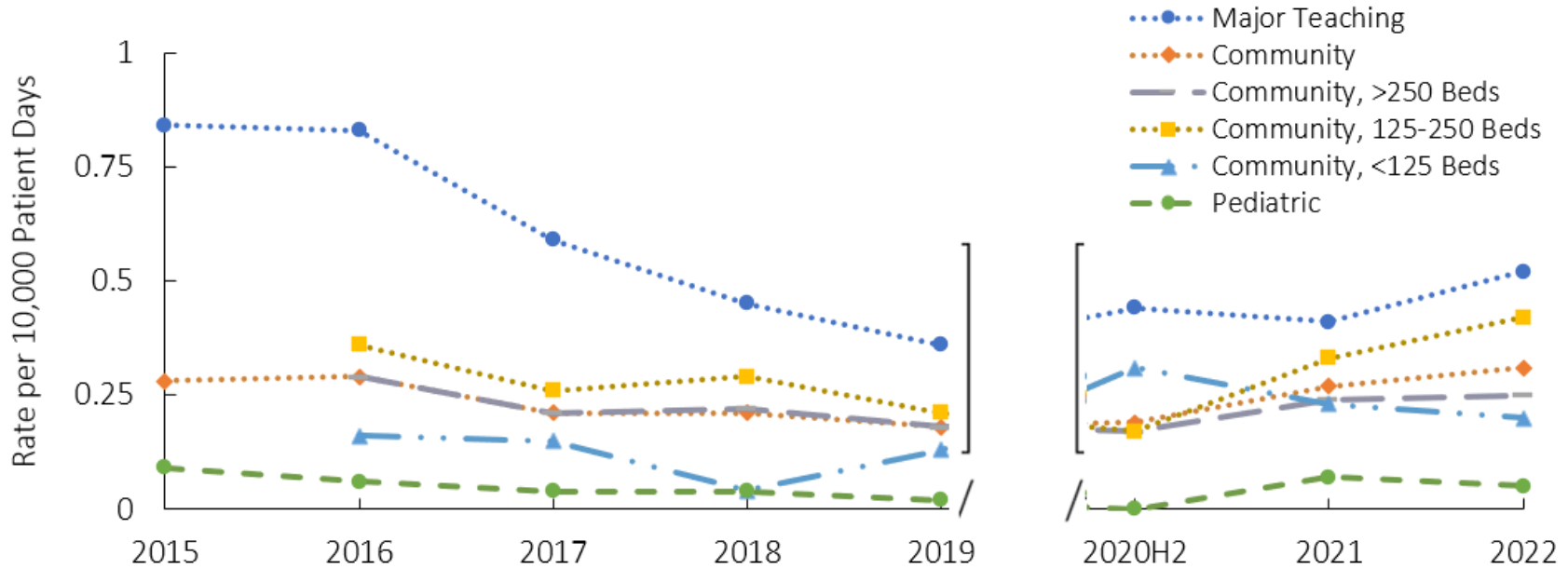
In 2022, hospitals reported 655 VRE BSI, 144 infections more than 2021, and the incidence rate was 23% higher than 2021. Among all hospital types, the incidence rate in major

teaching hospitals was significantly higher (1.27 times, $p < 0.001$) in 2022 compared with 2021 (Figure 4). Major teaching hospitals continued to have the highest VRE BSI rate among acute care hospitals (0.52 per 10,000 patient days) and accounted for 68% of all VRE BSI reported in acute care hospitals.

CDI

California hospitals reported 4,237 CDI in 2022, 118 fewer infections than 2021. The statewide SIR was 0.52, a reduction of 55% since 2015 and significantly lower than the national baseline SIR. However, the SIR among 10 pediatric hospitals was 0.89 in 2022, which is not significantly different from the national baseline and does not meet the 2020 reduction goal. Pediatric hospitals reported a total of 129 CDI and would have needed to prevent 29 infections in the same patient population to meet the 2020 reduction goal.

Figure 4. Unadjusted VRE Bloodstream Infection Rates by California Hospital Type, 2015-2022



Note: 2020H2 denotes the latter six months of 2020

SSI

CDPH reports SSI data separately for adult (18 years and older) and pediatric (younger than 18 years) surgical patients because different risk adjustment models are applied to account for differences in the two patient groups.

Among adult patients, California hospitals reported 3,711 SSI in 2022. The majority of SSI (90%) were reported among 18 surgical procedure types, which accounted for 95% of surgeries among the 28 surgical procedure types that hospitals are required to report (Table 2).

The statewide all-procedure adult SSI SIR is 0.86 in 2022, which is 8% higher than 2021. SSI risk was better than national baseline for 12 procedures and worse than the national baseline for one procedure. When the SIR was pooled across all procedure categories 49 facilities had significantly low SSI risk and 20 facilities had significantly high SSI risk for all procedure categories. (Appendices B and C). Twelve facilities had significantly worse performance for the same procedure in both for at least two consecutive years (Table 3).

Among pediatric patients, hospitals reported 91 SSI in 20,386 surgical procedures in 2022. The pediatric SSI SIR is 0.69 a 1% decrease from 2021.

Table 2. Hospital Surgical Site Infection Incidence in Adult Surgical Patients for 18 Most Common Surgical Procedure Categories, 2021 vs. 2022

Surgical procedure category	SIR 2021	SIR 2022	2022 Compared with National Baseline	Met 2020 Target Goal?
Appendix surgery	0.51	0.63	Better	Yes
Cardiac surgery	0.80	0.80	Same	No
Cesarean section	0.80	0.82	Better	No
Colon surgery	0.87	0.92	Better	No
Coronary bypass, chest, and donor incisions	0.82	0.67	Better	Yes
Exploratory abdominal surgery (laparotomy)	0.87	0.95	Same	No
Gallbladder surgery	0.89	0.97	Same	No
Gastric surgery	0.58	0.91	Same	No
Hip prosthesis	0.85	0.94	Same	No
Hysterectomy, abdominal	0.77	0.74	Better	No
Knee prosthesis	0.88	0.96	Same	No
Laminectomy	0.77	0.59	Better	Yes
Open reduction of fracture	0.79	0.88	Better	No
Ovarian surgery	0.61	1.07	Same	No
Pacemaker surgery	0.85	0.86	Same	No
Small bowel surgery	0.77	0.81	Better	No
Spinal fusion	0.87	0.99	Same	No
Thoracic surgery	0.65	0.72	Better	No

Table 3. Hospitals with Procedure-Specific Surgical Site Infection Risk in Adult Surgical Patients Worse than National Baseline for Consecutive Years*

Facility Name	County	Procedures	Years Worse
Cedars-Sinai Medical Center	Los Angeles	Colon surgery	2021, 2022
Emanuel Medical Center	Stanislaus	Colon surgery	2021, 2022
Kaiser Foundation Hospital – Orange County - Anaheim	Orange	Bile duct, liver or pancreatic surgery	2021, 2022
Fountain Valley Regional Hospital And Medical Center	Orange	Spinal fusion	2019, 2021, 2022
Uc San Diego Health La Jolla – Jacobs Medical Center & Sulpizio	San Diego	Exploratory abdominal surgery (laparotomy)	2021, 2022
Tenet Health Central Coast	San Luis	Hip prosthesis	2021, 2022
Twin Cities Community Hospital	Obispo		2022
Ridgecrest Regional Hospital	Kern	Colon surgery	2021, 2022
Eisenhower Medical Center	Riverside	Colon surgery, Open reduction of fracture	2021, 2022
Highland Hospital	Alameda	Colon surgery	2021, 2022
Providence Mission Hospital	Orange	Bile duct, liver or pancreatic surgery	2021, 2022
San Joaquin General Hospital	San Joaquin	Spinal fusion	2021, 2022
Loma Linda University Medical Center East Campus Hospital	San Bernardino	Spinal fusion	2021, 2022

*Due to the COVID-19 Pandemic and suspension of reporting requirements in the 1st half of 2020, data from 2020 is not included and thus 2021 and 2019 are classified as consecutive years.

HAI PREVENTION PROGRESS IN INDIVIDUAL HOSPITALS

The CDPH HAI Program uses annually reported HAI data to follow up with hospitals and communities for outreach and interventions.

Hospitals with Low HAI Incidence

Some individual hospitals are successfully sustaining low HAI incidence. Seventy-eight hospitals reported low CDI, 12 hospitals low CLABSI, and 10 low all-procedure adult SSI incidence for four or more consecutive years ending in 2022 (Table 4). The data from 2020 is not included in the consecutive years count because of the suspension of reporting requirements for half of 2020.

For CLABSI, of 308 hospitals with a calculated SIR in 2022, 43 (14%) were significantly better than national baseline, compared with 44 (14%) hospitals significantly better in 2021.

For MRSA BSI, of 295 hospitals with a calculated SIR in 2022, 15 (5%) were significantly better than national baseline, compared with five (1%) hospitals significantly better in 2021.

A total of 174 (55%) hospitals had a CDI SIR significantly better than national baseline in 2022, compared to from 174 hospitals (54%) in 2021.

Hospitals with High HAI Incidence

Eleven hospitals have HAI incidence that is significantly higher (worse) than national baselines for multiple HAI types in 2022 (Table 5).

For CLABSI, of 308 hospitals with a calculated SIR, 18 (6%) hospitals were significantly worse than national baseline, which is 11 fewer hospitals than 2021.

For MRSA BSI, three of the 13 hospitals that were significantly worse than national baseline in 2022 had a significantly high SIR in 2021.

For CDI, no hospitals are worse than national baseline in 2022 versus two (1%) hospitals in 2021.

Table 4. Hospitals with HAI Incidence Better than National Baselines for Four or More Consecutive Years, 2015-2022*

Hospital Name	County	HAI Type	# Years	Hospital Name	County	HAI Type	# Years
Alta Bates Summit Medical Center-Alta Bates Campus	Alameda	CDI	4	Hollywood Presbyterian Medical Center	Los Angeles	CDI	4
Alta Bates Summit Medical Center-Herrick Campus	Alameda	CDI	4	Kaiser Foundation Hospital - Los Angeles	Los Angeles	CDI	4
Eden Medical Center	Alameda	CDI	5	Kaiser Foundation Hospital - South Bay	Los Angeles	CDI	5
Kaiser Foundation Hospital - Oakland/Richmond	Alameda	CDI	4	Lac+Usc Medical Center	Los Angeles	CDI	5
Kaiser Foundation Hospital - San Leandro	Alameda	CDI	6	Lac+Usc Medical Center	Los Angeles	SSI	6
Enloe Medical Center - Cohasset	Butte	CLABSI	6	Martin Luther King, Jr. Community Hospital	Los Angeles	CDI	5
John Muir Medical Center-Walnut Creek Campus	Contra Costa	CDI	4	Northridge Hospital Medical Center	Los Angeles	CDI	5
Sutter Delta Medical Center	Contra Costa	CDI	4	Pomona Valley Hospital Medical Center	Los Angeles	CDI	4
Providence St. Joseph Hospital	Humboldt	CDI	4	Providence Cedars-Sinai Tarzana Medical Center	Los Angeles	CDI	4
Adventist Health Bakersfield	Kern	CDI	5	Providence Holy Cross Medical Center	Los Angeles	CDI	4
Kern Medical Center	Kern	CDI	4	Providence Little Company of Mary Medical Center Torrance	Los Angeles	CDI	4
Mercy Southwest Hospital	Kern	CDI	4	Providence Saint Joseph Medical Center	Los Angeles	CDI	4
Adventist Health Glendale	Los Angeles	CDI	5	Providence Saint Joseph Medical Center	Los Angeles	SSI	6
Adventist Health Glendale	Los Angeles	SSI	4	Saint John's Health Center	Los Angeles	SSI	6
Adventist Health White Memorial	Los Angeles	CDI	5	Torrance Memorial Medical Center	Los Angeles	CDI	4
Antelope Valley Hospital	Los Angeles	CDI	4	Valley Presbyterian Hospital	Los Angeles	CDI	4
California Hospital Medical Center - Los Angeles	Los Angeles	CDI	6	Whittier Hospital Medical Center	Los Angeles	CDI	4
Centinela Hospital Medical Center	Los Angeles	CLABSI	4	Valley Children's Hospital	Madera	CLABSI	5
Centinela Hospital Medical Center	Los Angeles	CDI	4	Mercy Medical Center	Merced	CDI	5
Children's Hospital Los Angeles	Los Angeles	CLABSI	4	Natividad Medical Center	Monterey	CDI	6
City Of Hope Helford Clinical Research Hospital	Los Angeles	SSI	5	Salinas Valley Health Medical Center	Monterey	CLABSI	4
Emanate Health Foothill Presbyterian Hospital	Los Angeles	CLABSI	4	College Hospital Costa Mesa	Orange	CDI	6
Emanate Health Inter-Community Hospital	Los Angeles	CLABSI	5	Hoag Memorial Hospital Presbyterian	Orange	CDI	4
Emanate Health Queen of The Valley Hospital	Los Angeles	CLABSI	6	Providence St. Jude Medical Center	Orange	CDI	6
Glendale Memorial Hospital and Health Center	Los Angeles	CDI	4	University Of California Irvine Medical Center	Orange	CDI	4
Henry Mayo Newhall Hospital	Los Angeles	CDI	4	Kaiser Foundation Hospital - Roseville	Placer	CDI	5
				Sutter Roseville Medical Center	Placer	CDI	5
				Desert Regional Medical Center	Riverside	CDI	4
				Hemet Global Medical Center	Riverside	CDI	4

Hospital Name	County	HAI Type	# Years
Riverside University Health System - Medical Center	Riverside	CLABSI	5
Riverside University Health System - Medical Center	Riverside	CDI	6
Southwest Healthcare Inland Valley Hospital	Riverside	SSI	6
Kaiser Foundation Hospital - Sacramento	Sacramento	CDI	5
Kaiser Foundation Hospital - South Sacramento	Sacramento	CDI	5
Mercy General Hospital	Sacramento	CDI	4
Mercy General Hospital	Sacramento	SSI	6
Mercy San Juan Medical Center	Sacramento	CLABSI	6
Mercy San Juan Medical Center	Sacramento	CDI	4
Mercy San Juan Medical Center	Sacramento	SSI	5
Sutter Medical Center, Sacramento	Sacramento	CDI	5
University Of California Davis Medical Center	Sacramento	CDI	4
Arrowhead Regional Medical Center	San Bernardino	CDI	6
Providence St. Mary Medical Center	San Bernardino	CDI	4
St. Bernardine Medical Center	San Bernardino	SSI	6
Grossmont Hospital	San Diego	CLABSI	4
Grossmont Hospital	San Diego	CDI	4
Palomar Medical Center	San Diego	CDI	5
Scripps Memorial Hospital - Encinitas	San Diego	CDI	4
Scripps Memorial Hospital - La Jolla	San Diego	CDI	5
Scripps Mercy Hospital	San Diego	CDI	6
Scripps Mercy Hospital Chula Vista	San Diego	CDI	5

Hospital Name	County	HAI Type	# Years
Sharp Chula Vista Medical Center	San Diego	CDI	4
Sharp Mary Birch Hospital for Women and Newborns	San Diego	CDI	6
Sharp Memorial Hospital	San Diego	CDI	6
Adventist Health Lodi Memorial	San Joaquin	CDI	4
San Joaquin General Hospital	San Joaquin	CDI	5
St. Joseph's Medical Center of Stockton	San Joaquin	CDI	4
Sutter Tracy Community Hospital	San Joaquin	CDI	4
Kaiser Foundation Hospital - Redwood City	San Mateo	CDI	6
Kaiser Foundation Hospital - South San Francisco	San Mateo	CDI	5
Mills-Peninsula Medical Center	San Mateo	SSI	4
Marian Regional Medical Center	Santa Barbara	CDI	4
El Camino Health	Santa Clara	CDI	5
Regional Medical Center of San Jose	Santa Clara	CDI	6
Dominican Hospital	Santa Cruz	CDI	4
Shasta Regional Medical Center	Shasta	CDI	4
Kaiser Foundation Hospital & Rehab Center - Vallejo	Solano	CDI	4
Kaiser Foundation Hospital - Santa Rosa	Sonoma	CDI	4
Doctors Medical Center	Stanislaus	CLABSI	5
Doctors Medical Center	Stanislaus	CDI	4
Emanuel Medical Center	Stanislaus	CDI	4
Kaiser Foundation Hospital Modesto	Stanislaus	CDI	4
Memorial Medical Center	Stanislaus	CDI	4
Kaweah Health Medical Center	Tulare	CDI	4

*Due to the COVID-19 Pandemic and suspension of reporting requirements in the 1st half of 2020, data from 2020 is not included and thus 2019 and 2021 are classified as consecutive years.

Table 5. Hospitals with HAI Incidence Worse than National Baselines or Pooled Statewide Average Rate in 2022 for Multiple Infection Types or in Consecutive Years*

Hospital Name	County	HAI Type	Worse than 2015 National Baseline
Highland Hospital	Alameda	SSI	2021, 2022
El Centro Regional Medical Center	Imperial	CLABSI	2021, 2022
Pioneers Memorial Healthcare District	Imperial	CLABSI	2021, 2022
Cedars-Sinai Medical Center	Los Angeles	VRE BSI	2019, 2021, 2022
City Of Hope Helford Clinical Research Hospital	Los Angeles	CLABSI	2022
City Of Hope Helford Clinical Research Hospital	Los Angeles	VRE BSI	2015, 2016, 2017, 2018, 2019, 2021, 2022
Kaiser Foundation Hospital, West LA	Los Angeles	MRSA BSI	2022
Kaiser Foundation Hospital-West La	Los Angeles	CLABSI	2022
Keck Hospital Of USC	Los Angeles	VRE BSI	2019, 2021, 2022
Los Angeles Community Hospital	Los Angeles	MRSA BSI	2021, 2022
Los Angeles Community Hospital	Los Angeles	VRE BSI	2021, 2022
Norwalk Community Hospital	Los Angeles	VRE BSI	2021, 2022
Fountain Valley Regional Hospital & Medical Center	Orange	CLABSI	2021, 2022
Fountain Valley Regional Hospital & Medical Center	Orange	SSI	2019, 2021, 2022
Huntington Beach Hospital	Orange	CLABSI	2021, 2022
Huntington Beach Hospital	Orange	VRE BSI	2022
Los Alamitos Medical Center	Orange	MRSA BSI	2021, 2022
Los Alamitos Medical Center	Orange	SSI	2022
Riverside Community Hospital	Riverside	CLABSI	2021, 2022
San Geronio Memorial Hospital	Riverside	CLABSI	2022
San Geronio Memorial Hospital	Riverside	SSI	2022
University of California Davis Medical Center	Sacramento	MRSA BSI	2022
University Of California Davis Medical Center	Sacramento	VRE BSI	2021, 2022
Loma Linda University Medical Center	San Bernardino	VRE BSI	2016, 2017, 2018, 2019, 2021, 2022
UCSF Medical Center	San Francisco	VRE BSI	2021, 2022
Doctors Hospital of Manteca	San Joaquin	CLABSI	2021, 2022
San Joaquin General Hospital	San Joaquin	CLABSI	2021, 2022
San Joaquin General Hospital	San Joaquin	SSI	2022
Tenet Health Central Coast Twin Cities Community Hospital	San Luis Obispo	SSI	2018, 2019, 2021, 2022

Hospital Name	County	HAI Type	Worse than 2015 National Baseline
Stanford Health Care	Santa Clara	VRE BSI	2015, 2016, 2017, 2018, 2019, 2021, 2022
Shasta Regional Medical Center	Shasta	CLABSI	2022
Shasta Regional Medical Center	Shasta	VRE BSI	2022
Emanuel Medical Center	Stanislaus	MRSA BSI	2022
Emanuel Medical Center	Stanislaus	SSI	2021, 2022
Sierra View Medical Center	Tulare	CLABSI	2022
Sierra View Medical Center	Tulare	MRSA BSI	2022
Adventist Health and Rideout	Yuba	MRSA BSI	2021, 2022

*Due to the COVID-19 Pandemic and suspension of reporting requirements in the 1st half of 2020, data from 2020 is not included and thus 2019 and 2021 are classified as consecutive years.

LONG-TERM ACUTE CARE (LTAC) HOSPITALS

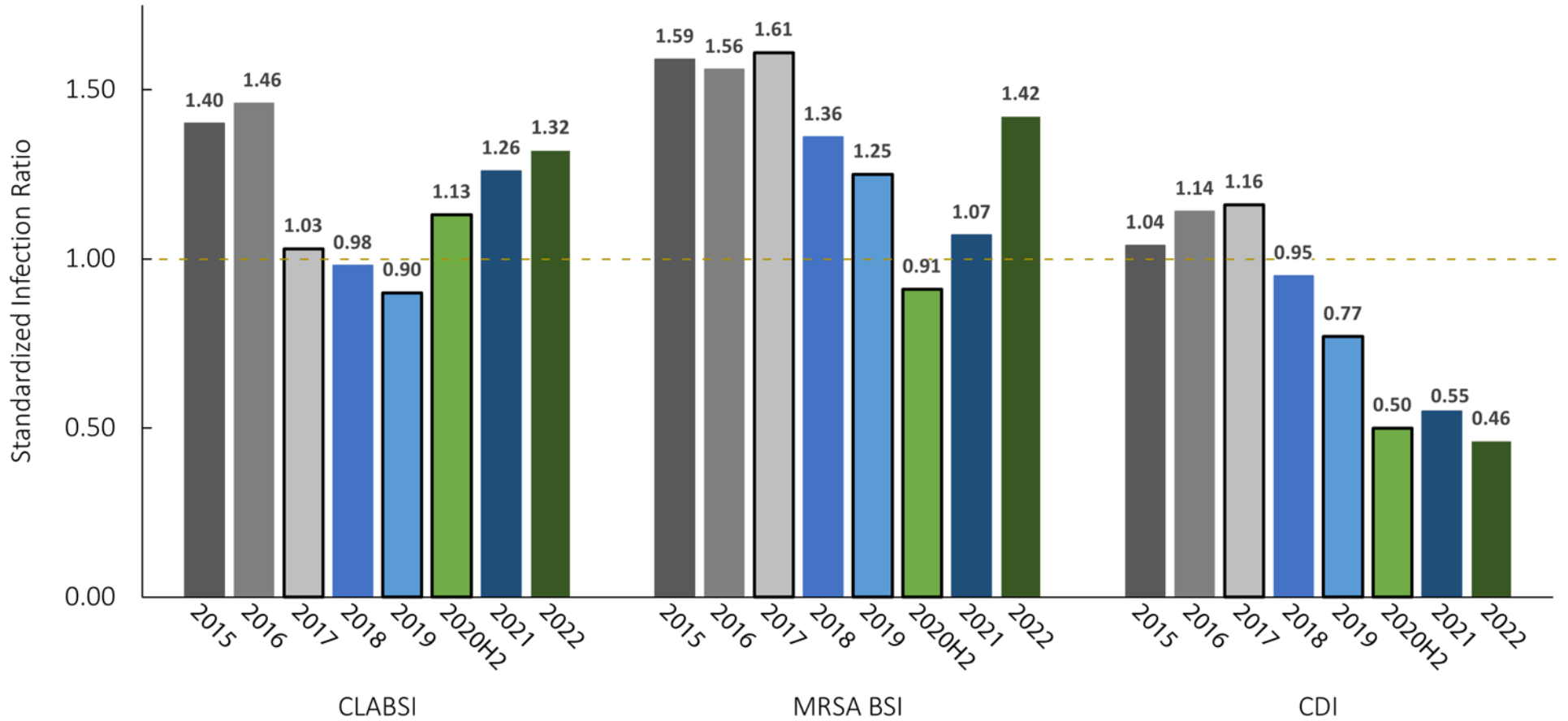
LTAC hospitals provide complex care to patients that typically require prolonged acute care (greater than 25 days) for respiratory ventilation, multiple intravenous (IV) medications, or complex wound care.

CLABSI in LTAC Hospitals

In 2022, LTAC hospitals reported 334 CLABSI, 8 more than in 2021. The statewide CLABSI SIR was 1.32, which is significantly higher than the national baseline. The SIR increased by 5% since 2021 (Figure 5). LTAC hospitals would have needed to prevent 208 infections in the same patient population to meet the 2020 CLABSI reduction goal.

Three LTAC hospitals were better than the national baseline in 2022. Seven LTAC hospitals were significantly worse than the national baseline.

Figure 5. Healthcare-Associated Infection Incidence in California Long-Term Acute Care Hospitals, 2015-2022



Note: Dashed horizontal line reflects the national baseline for the standardized infection ratio (SIR). An SIR below the dashed line represents HAI prevention progress if the reduction was statistically significant. 2020H2 bar presents SIR for the latter six months of 2020.

MRSA BSI in LTAC Hospitals

In 2022, 22 LTAC hospitals reported 107 MRSA BSI, 28 more than the number reported in 2021. The statewide MRSA BSI SIR was 1.42 (Figure 5) and was worse than the national baseline. LTAC hospitals would have needed to prevent 70 infections in the same patient population to meet the 2020 prevention goal.

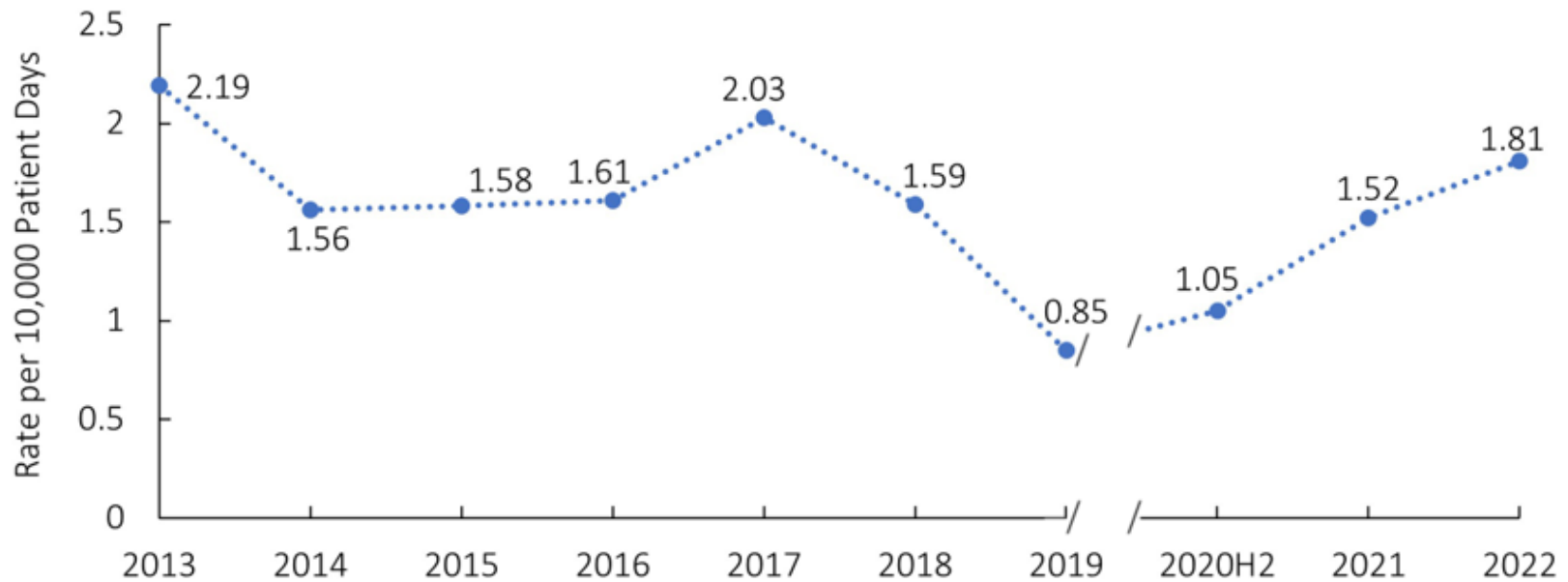
VRE BSI in LTAC Hospitals

In 2022, 22 LTAC hospitals reported 79 VRE BSI, 14 more than reported in 2021. The incidence of 1.81 per 10,000 patient days in 2022 was 19% higher compared with 2021 (Figure 6). LTAC hospitals continued to have the highest VRE BSI incidence among all hospital types.

CDI in LTAC Hospitals

LTAC hospitals reported 228 CDI in 2022, 36 infections fewer than the number reported in 2021. The statewide SIR among LTAC hospitals was 0.46, which is significantly better than national baseline and less than the 2020 prevention goal for CDI. Compared with the 2015 SIR, the CDI incidence has decreased by 56% (Figure 5).

Figure 6. Unadjusted VRE Bloodstream Infection Rates among Long-Term Acute Care Hospitals, 2013-2022



Note: 2020H2 denotes the latter six months of 2020.

CRITICAL ACCESS HOSPITALS

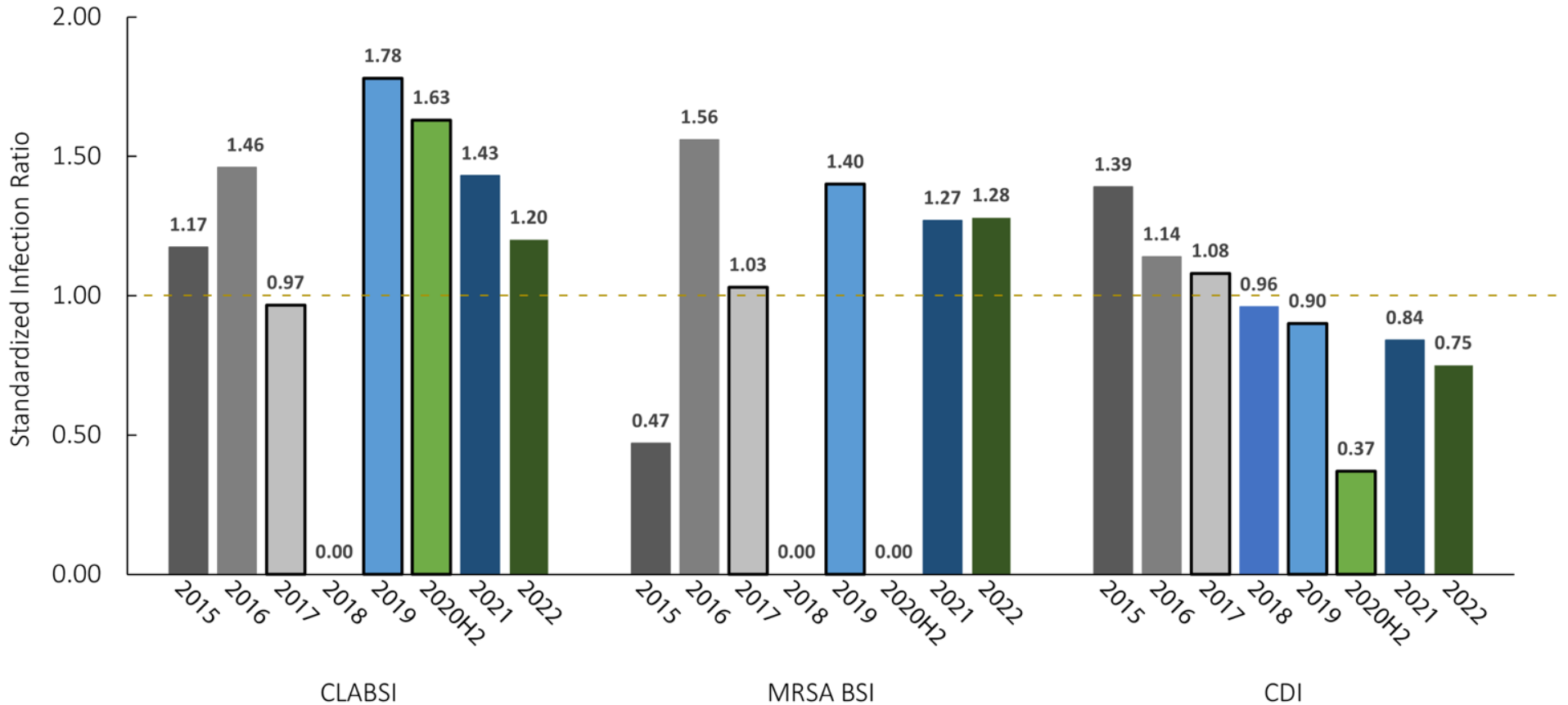
Critical access hospitals have 25 or fewer beds and are located more than 35 miles from another hospital (with some exceptions). Patients in critical access hospitals stay on average four days or less.

In 2022, 36 California critical access hospitals reported three CLABSI, three MRSA BSI, zero VRE BSI, and 25 CDI (four fewer CDI than 2021).

The statewide CDI SIR was 0.75 and not significantly different from national baseline.

Critical access hospitals would have needed to prevent two CDI to meet the 2020 reduction goals.

Figure 7. Healthcare-Associated Infection Incidence in California Critical Access Hospitals, 2015-2022



Note: Dashed horizontal line reflects the national baseline for the standardized infection ratio (SIR). An SIR below the dashed line represents HAI prevention progress if the reduction was statistically significant. 2020H2 bar presents SIR for the latter six months of 2020.

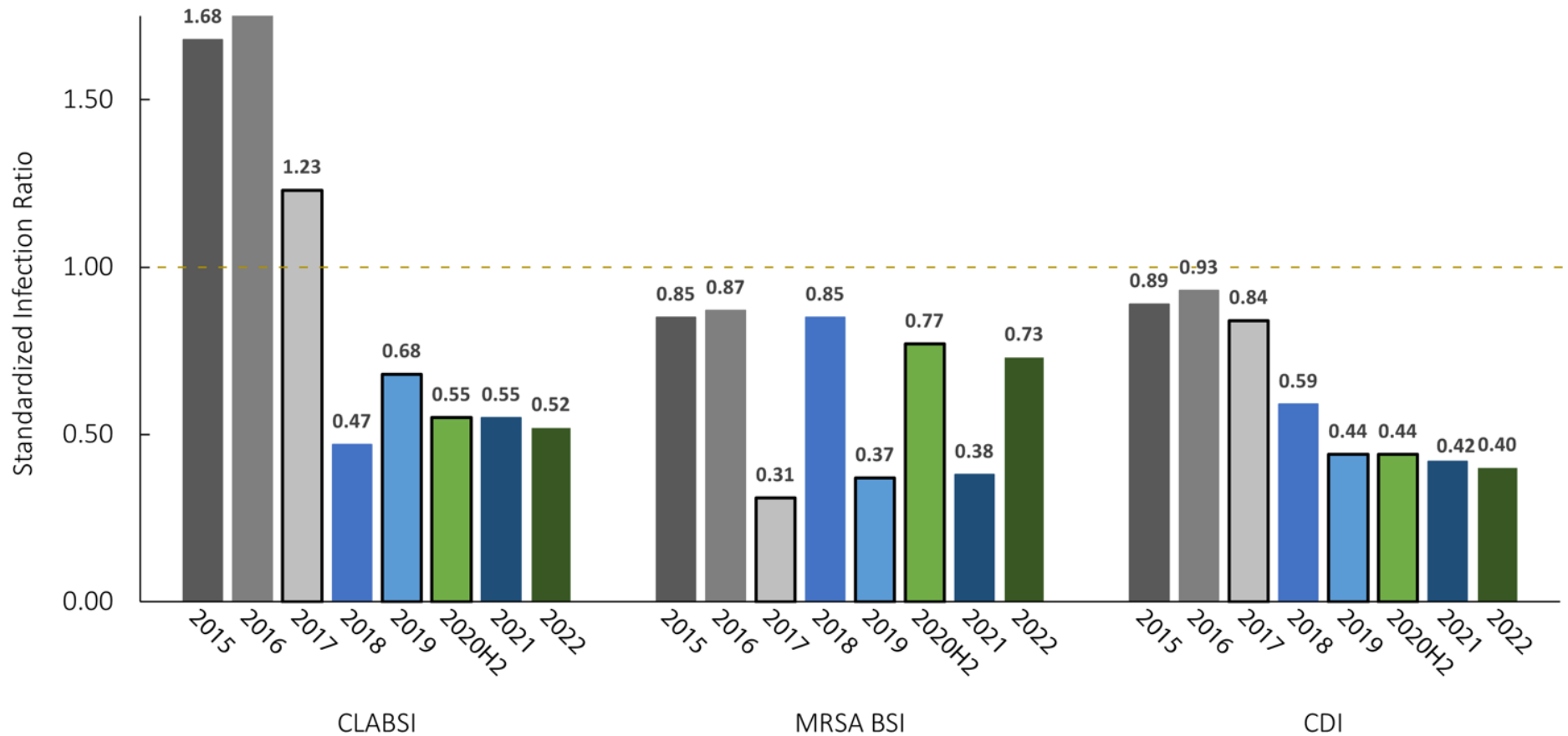
REHABILITATION HOSPITALS AND UNITS

Acute care rehabilitation hospitals and units evaluate and restore function to patients who suffer from acute or chronic pain, musculoskeletal problems, stroke, and catastrophic events resulting in complete or partial paralysis.

In 2022, freestanding rehabilitation hospitals (n=12) and hospital-based acute care rehabilitation units reported 10 CLABSI, seven MRSA BSI, zero VRE BSI, and 97 CDI (two CDI fewer than 2021).

For CDI these hospitals and units met the 2020 reduction goals in 2022 and 2021.

Figure 8. Healthcare-Associated Infection Incidence in California Rehabilitation Hospitals and Units, 2015-2022



Note: Dashed horizontal line reflects the national baseline for the standardized infection ratio (SIR). An SIR below the dashed line represents HAI prevention progress if the reduction was statistically significant. 2020H2 bar presents SIR for the latter six months of 2020.

PUBLIC HEALTH ACTION

To address the substantial increases in CLABSI and MRSA BSI incidence that occurred in 2020–2021, the HAI Program initiated a CLABSI reduction initiative during the spring of 2022. The goal of the initiative was to engage hospital leaders and infection preventionists in reinstating strategies known to reduce CLABSI (including those caused by MRSA) while building resiliency in their CLABSI prevention practices. The HAI Program selected 36 hospitals with a significantly high CLABSI SIR or a high cumulative attributable difference (CAD) for engagement. The project included onsite assessments (including adherence monitoring of central line insertion and maintenance practices) at each selected hospital, consultation on developing facility specific CLABSI reduction plans, and follow-up with scheduled check-in and coaching sessions. Other activities included educational webinars and trainings, including a workshop focused on ensuring the sustainability of CLABSI prevention practices.

In 2022, the HAI Program expanded our regional and statewide AR prevention and response initiatives with LTACs, including proactive testing, onsite assessments of infection prevention and control practices, and antimicrobial stewardship support aimed at

reducing multidrug-resistant organisms such as [Candida auris](http://www.cdph.ca.gov/Programs/CHCQ/HAI/Pages/Candida-auris.aspx) (www.cdph.ca.gov/Programs/CHCQ/HAI/Pages/Candida-auris.aspx) and other pathogens that can cause CLABSI.

To ensure the quality and consistency of hospital HAI surveillance practices and publicly reported data used to inform and track HAI prevention progress, the HAI Program resumed routine annual HAI data validation exercises with hospitals in 2022. [Data validation](http://www.cdph.ca.gov/Programs/CHCQ/HAI/Pages/ACH_Internal_Data_Validation.aspx) (www.cdph.ca.gov/Programs/CHCQ/HAI/Pages/ACH_Internal_Data_Validation.aspx) consists of an internal validation workbook for all hospitals, and an external validation visit conducted by HAI Program infection preventionist staff at a randomly selected subset of hospitals.

To better understand and promote resilience in hospital infection prevention programs, the HAI Program initiated a research project to identify facility-level factors that mitigate or exacerbate the effect of healthcare system stressors (including staffing shortages and facility overcrowding) on HAIs and other threats to patient safety. The results of this project may be used to inform policies at state,

regional, health system, and individual facility levels.

As part of CDPH’s commitment to reducing health disparities experienced by vulnerable communities in California, identifying and responding to areas of health disparities in HAIs and antimicrobial resistance (AR) has become a priority of the HAI program. The Program is engaging in health-equity related initiatives across all program areas, including an analysis examining the relationship between social determinants of health (including race, income, primary language, and the California Healthy Places Index) and SSI risk in colon surgery and cesarean section patients using data from NHSN and the California Department of Health Care Access and Information (HCAI).

See the [HAI Program website](http://www.cdph.ca.gov/Programs/CHCQ/HAI/Pages/HAIProgramHome.aspx) (www.cdph.ca.gov/Programs/CHCQ/HAI/Pages/HAIProgramHome.aspx) for more information about the program’s other HAI and AR prevention and response activities across the continuum of healthcare.

REFERENCES

1. Umscheid CA, Mitchell MD, Doshi JA, et al. [Estimating the proportion of healthcare-associated infections that are reasonably preventable and the related mortality and costs.](https://doi.org/10.1086/657912) (doi.org/10.1086/657912) *Infect Control Hosp Epidemiol.* 2011;32(2):101-14. 10.1086/657912
2. Centers for Disease Control and Prevention. [Paving the Path Forward: 2015 Rebaseline.](http://www.cdc.gov/nhsn/2015rebaseline) (www.cdc.gov/nhsn/2015rebaseline) Accessed September 2022.
3. Centers for Disease Control and Prevention. [The NHSN Standardized Infection Ratio \(SIR\): A Guide to the SIR, March 2018.](http://www.cdc.gov/nhsn/pdfs/ps-analysis-resources/nhsn-sir-guide.pdf) (PDF) (www.cdc.gov/nhsn/pdfs/ps-analysis-resources/nhsn-sir-guide.pdf) Accessed September 2022.
4. U.S. Department of Health and Human Services, U.S. Department of Defense, U.S. Department of Labor and U.S. Department of Veterans Affairs. [National Action Plan to Prevent Health Care-Associated Infections: Road Map to Elimination, 2013.](http://health.gov/our-work/health-care-quality/health-care-associated-infections/national-hai-action-plan) (health.gov/our-work/health-care-quality/health-care-associated-infections/national-hai-action-plan) Accessed September 2022.

Appendix A. California General Acute Care Hospitals with Incomplete Reporting of Healthcare-Associated Infections Data, 2022*

County Hospital	Infection Type(s) with Missing or Incomplete Data in 2022	Incomplete or Missing Data in Previous Years for At Least One HAI Type
Fresno		
Coalinga Regional Medical Center	CLABSI, VRE BSI	
Humboldt		
The General Hospital	CLABSI, MRSA BSI, VRE BSI, CDI	
Inyo		
Southern Inyo Hospital	CLABSI, MRSA BSI, VRE BSI, CDI	2015, 2017, 2018, 2019, 2021
Los Angeles		
California Rehabilitation Institute	MRSA BSI	
Pacific Gardens Medical Center	CLABSI, MRSA BSI, VRE BSI, CDI	
Modoc		
Modoc Medical Center	CLABSI, MRSA BSI, VRE BSI, CDI	2018, 2021
Surprise Valley Community Hospital	CLABSI	2015, 2016, 2017
Orange		
Anaheim Community Hospital	CLABSI, MRSA BSI, VRE BSI, CDI	
Anaheim Global Medical Center	CLABSI, MRSA BSI, VRE BSI, CDI	2019, 2020, 2021
Plumas		
Eastern Plumas Hospital - Portola Campus	CLABSI, MRSA BSI, VRE BSI, CDI	2015, 2017
Seneca District Hospital	CLABSI	2015, 2017, 2018, 2019, 2021
San Bernardino		
Colorado River Medical Center	CLABSI, MRSA BSI, VRE BSI, CDI	2021
Shasta		
Patients' Hospital of Redding	CLABSI, MRSA BSI, VRE BSI, CDI	
Sonoma		
Sonoma Specialty Hospital	CLABSI, MRSA BSI, VRE BSI, CDI	2018

* Due to the COVID-19 Pandemic and suspension of year-wide reporting requirements in 2020, data from 2020 is not included in this table.

Appendix B. California Hospitals with HAI Incidence Better or Worse than National Baseline or Statewide Pooled Average Rate, 2022

Hospitals by County	CDI	CLABSI	MRSA BSI	VRE BSI	SSI
Alameda					
Alameda Hospital	★				
Alta Bates Summit Medical Center - Summit Campus	★	★			★
Alta Bates Summit Medical Center - Alta Bates Campus	★		★		
Eden Medical Center	★				
Highland Hospital					✘
Kaiser Foundation Hospital - Fremont	★				
Kaiser Foundation Hospital - Oakland/Richmond	★		★		
Kaiser Foundation Hospital - San Leandro	★				
San Leandro Hospital	★				
St. Rose Hospital	★				
Stanford Health Care Tri-Valley	★				
UCSF Benioff Children's Hospital Oakland		★			
Washington Hospital	★	★			★
Butte					
Enloe Medical Center - Esplanade		★			
Oroville Hospital					✘
Contra Costa					
John Muir Medical Center - Walnut Creek Campus	★				✘
Kaiser Foundation Hospital - Walnut Creek	★		★		
Sutter Delta Medical Center	★				
Fresno					
Clovis Community Medical Center	★				
Community Regional Medical Center					✘
Fresno Heart and Surgical Hospital					★
Fresno Surgical Hospital					★
Kaiser Foundation Hospital - Fresno	★				✘
Saint Agnes Medical Center	★	✘			
Humboldt					
Providence St. Joseph Hospital	★	★			★
Imperial					
El Centro Regional Medical Center		✘			
Pioneers Memorial Healthcare District		✘			
Kern					
Adventist Health Bakersfield	★				
Bakersfield Memorial Hospital	★				
Kern Medical Center	★				
Mercy Hospital	★				
Mercy Southwest Hospital	★				★

Appendix B. California Hospitals with HAI Incidence Better or Worse than National Baseline or Statewide Pooled Average Rate, 2022

Hospitals by County	CDI	CLABSI	MRSA BSI	VRE BSI	SSI
Los Angeles					
Adventist Health Glendale	★	★			★
Adventist Health White Memorial	★				★
Alhambra Hospital Medical Center	★				
Antelope Valley Hospital	★				★
Beverly Hospital	★				
California Hospital Medical Center - Los Angeles	★				
Cedars-Sinai Medical Center		★		✘	
Centinela Hospital Medical Center	★	★			
Children's Hospital Los Angeles		★			
City of Hope Helford Clinical Research Hospital		✘	★	✘	★
Emanate Health Foothill Presbyterian Hospital		★			
Emanate Health Inter - Community Hospital		★			★
Emanate Health Queen of the Valley Hospital	★	★			★
Garfield Medical Center		✘			
Glendale Memorial Hospital and Health Center	★				
Greater El Monte Community Hospital	★				
Henry Mayo Newhall Hospital	★				
Hollywood Presbyterian Medical Center	★				
Huntington Hospital	★			✘	
Kaiser Foundation Hospital - Los Angeles	★				
Kaiser Foundation Hospital - South Bay	★				
Kaiser Foundation Hospital - Downey					★
Kaiser Foundation Hospital - West LA		✘	✘		★
Keck Hospital of USC				✘	
LAC+USC Medical Center	★				★
LAC/Harbor UCLA Medical Center				✘	
LAC/Rancho Los Amigos National Rehabilitation Center		✘			
Lakewood Regional Medical Center	★				
Los Angeles Community Hospital	★		✘	✘	
Martin Luther King, Jr. Community Hospital	★				
Memorial Hospital of Gardena	★		✘		
MemorialCare Long Beach Medical Center	★		✘		
Monterey Park Hospital					✘
Northridge Hospital Medical Center	★	★	★	★	
Norwalk Community Hospital				✘	
Palmdale Regional Medical Center	★				★
PIH Health Downey Hospital	★	★			
PIH Health Good Samaritan Hospital	★	★			

Appendix B. California Hospitals with HAI Incidence Better or Worse than National Baseline or Statewide Pooled Average Rate, 2022

Hospitals by County	CDI	CLABSI	MRSA BSI	VRE BSI	SSI
PIH Health Whittier Hospital		★		★	★
Pomona Valley Hospital Medical Center	★			★	
Providence Cedars-Sinai Tarzana Medical Center	★				
Providence Holy Cross Medical Center	★	★			★
Providence Little Company of Mary Medical Center Torrance	★				
Providence Saint Joseph Medical Center	★				★
Ronald Reagan UCLA Medical Center	★	★	★	✘	★
Saint John's Health Center					★
San Dimas Community Hospital			✘		
San Gabriel Valley Medical Center	★	✘			
Santa Monica - UCLA Medical Center and Orthopaedic Hospital	★				
Southern California Hospital at Culver City	★	★			
Southern California Hospital at Hollywood	★				
St. Francis Medical Center	★				★
St. Mary Medical Center	★				
Torrance Memorial Medical Center	★	★			
USC Kenneth Norris Jr. Cancer Hospital				✘	
Valley Presbyterian Hospital	★				★
West Hills Hospital & Medical Center	★				
Whittier Hospital Medical Center	★	✘			
Madera					
Valley Children's Hospital		★			
Marin					
MarinHealth Medical Center	★	★			
Merced					
Mercy Medical Center	★				
Monterey					
Community Hospital of the Monterey Peninsula	★				
Natividad Medical Center	★				
Salinas Valley Health Medical Center		★			
Nevada					
Sierra Nevada Memorial Hospital					✘
Orange					
AHMC Anaheim Regional Medical Center	★				
College Hospital Costa Mesa	★				
Foothill Regional Medical Center	★				★
Fountain Valley Regional Hospital and Medical Center	★	✘			✘

Appendix B. California Hospitals with HAI Incidence Better or Worse than National Baseline or Statewide Pooled Average Rate, 2022

Hospitals by County	CDI	CLABSI	MRSA BSI	VRE BSI	SSI
Hoag Memorial Hospital Presbyterian	★				
Huntington Beach Hospital		✘		✘	
Kaiser Foundation Hospital - Orange County - Anaheim				★	
Kaiser Foundation Hospital - Orange County - Irvine	★		★		✘
La Palma Intercommunity Hospital	★				
Los Alamitos Medical Center			✘		✘
MemorialCare Orange Coast Medical Center	★				✘
MemorialCare Saddleback Medical Center	★				
Orange County Global Medical Center	★				★
Providence Mission Hospital	★	★			
Providence St. Joseph Hospital					★
Providence St. Jude Medical Center	★				
University of California Irvine Medical Center	★	★			★
West Anaheim Medical Center	★				
Placer					
Kaiser Foundation Hospital - Roseville	★			★	✘
Sutter Roseville Medical Center	★	★			
Riverside					
Corona Regional Medical Center	★				
Desert Regional Medical Center	★				★
Doctors Hospital of Riverside	★				★
Eisenhower Medical Center	★				
Hemet Global Medical Center	★				★
John F. Kennedy Memorial Hospital	★				
Kaiser Foundation Hospital, Riverside	★				
Kaiser Foundation Hospital-Moreno Valley	★				✘
Loma Linda University Medical Center - Murrieta	★		✘		
Riverside Community Hospital	★	✘			
Riverside University Health System - Medical Center	★	★			★
San Geronio Memorial Hospital		✘			✘
Southwest Healthcare Inland Valley Hospital		★			★
Temecula Valley Hospital	★	★			
Sacramento					
Kaiser Foundation Hospital - Sacramento	★				
Kaiser Foundation Hospital - South Sacramento	★				
Mercy General Hospital	★			★	★
Mercy Hospital of Folsom	★				
Mercy San Juan Medical Center	★	★		★	★
Methodist Hospital of Sacramento	★				

Appendix B. California Hospitals with HAI Incidence Better or Worse than National Baseline or Statewide Pooled Average Rate, 2022

Hospitals by County	CDI	CLABSI	MRSA BSI	VRE BSI	SSI
Sutter Medical Center, Sacramento	★				
University of California Davis Medical Center	★		✘	✘	
San Bernardino					
Arrowhead Regional Medical Center	★	★	★	★	
Community Hospital of San Bernardino	★				
Kaiser Foundation Hospital - Ontario	★				
Loma Linda University Children's Hospital	★	★		★	
Loma Linda University Medical Center	★	★		✘	
Montclair Hospital Medical Center	★				
Providence St. Mary Medical Center	★				
San Antonio Regional Hospital	★				
St. Bernardine Medical Center	★	★			★
San Diego					
Grossmont Hospital	★	★	★		
Kaiser Foundation Hospital - San Diego			★	★	
Kaiser Foundation Hospital - Zion					✘
Palomar Medical Center	★				
Palomar Medical Center Poway	★				
Paradise Valley Hospital	★				
Scripps Green Hospital	★				
Scripps Memorial Hospital - Encinitas	★			★	
Scripps Memorial Hospital - La Jolla	★		★		
Scripps Mercy Hospital	★				
Scripps Mercy Hospital Chula Vista	★				
Sharp Chula Vista Medical Center	★				
Sharp Mary Birch Hospital for Women and Newborns	★				
Sharp Memorial Hospital	★				
UC San Diego Health La Jolla - Jacobs Medical Center & Sulpizio Cardiovascular Center	★	★			
San Francisco					
California Pacific Medical Center - Mission Bernal Campus and Orthopedic Institute	★				★
California Pacific Medical Center - Van Ness Campus	★	★		✘	★
Kaiser Foundation Hospital - San Francisco	★				
Priscilla Chan and Mark Zuckerberg San Francisco General Hospital and Trauma Center					★
Saint Francis Memorial Hospital	★				
UCSF Medical Center			★	✘	★
UCSF Medical Center at Mission Bay	★				★

Appendix B. California Hospitals with HAI Incidence Better or Worse than National Baseline or Statewide Pooled Average Rate, 2022

Hospitals by County	CDI	CLABSI	MRSA BSI	VRE BSI	SSI
San Joaquin					
Adventist Health Lodi Memorial	★				
Doctors Hospital of Manteca		✘			
San Joaquin General Hospital	★	✘	★		✘
St. Joseph's Medical Center of Stockton	★			✘	
Sutter Tracy Community Hospital	★				
San Luis Obispo					
French Hospital Medical Center	★				
Marian Regional Medical Center, Arroyo Grande	★				
Tenet Health Central Coast Sierra Vista Regional Medical Center	★				
Tenet Health Central Coast Twin Cities Community Hospital	★				✘
San Mateo					
AHMC Seton Medical Center	★				
Kaiser Foundation Hospital - Redwood City	★				
Kaiser Foundation Hospital - South San Francisco	★				
Mills-Peninsula Medical Center	★				★
Sequoia Hospital	★				★
Santa Barbara					
Lompoc Valley Medical Center					✘
Marian Regional Medical Center	★				
Santa Barbara Cottage Hospital	★	✘	★	★	
Santa Clara					
El Camino Health	★				
Good Samaritan Hospital	★				
Kaiser Foundation Hospital - San Jose			✘		
Kaiser Foundation Hospital - Santa Clara	★	★			
Mission Oaks Hospital	★				
O'connor Hospital	★		★	★	✘
Regional Medical Center of San Jose	★	★			★
Santa Clara Valley Medical Center	★	★			
Stanford Health Care	★	★		✘	★
Santa Cruz					
Dominican Hospital	★				
Shasta					
Mercy Medical Center Redding	★				
Shasta Regional Medical Center	★	✘		✘	
Solano					
Kaiser Foundation Hospital & Rehab Center - Vallejo	★				

Appendix B. California Hospitals with HAI Incidence Better or Worse than National Baseline or Statewide Pooled Average Rate, 2022

Hospitals by County	CDI	CLABSI	MRSA BSI	VRE BSI	SSI
Kaiser Foundation Hospital - Vacaville	★				
NorthBay Medical Center	★				★
Sutter Solano Medical Center	★				
Sonoma					
Kaiser Foundation Hospital - Santa Rosa	★				
Providence Santa Rosa Memorial Hospital	★				
Sutter Santa Rosa Regional Hospital	★				
Stanislaus					
Doctors Medical Center	★	★			
Emanuel Medical Center	★		✘		✘
Kaiser Foundation Hospital Modesto	★				
Memorial Medical Center	★				
Tulare					
Kaweah Health Medical Center	★				★
Sierra View Medical Center	★	✘	✘		
Ventura					
Adventist Health Simi Valley			✘		★
Los Robles Hospital & Medical Center	★				
St. Johns Regional Medical Center	★				★
Ventura County Medical Center					★
Yolo					
Sutter Davis Hospital	★				
Yuba					
Adventist Health and Rideout	★	★	✘		

Appendix C. California Hospitals with Surgical Site Infection Incidence Better or Worse than National Baseline, 2022

Hospitals by County	Better	Worse
Alameda		
Highland Hospital		Colon surgery; Spinal fusion
Butte		
Enloe Medical Center - Esplanade	Colon surgery	
Oroville Hospital		Colon surgery
Contra Costa		
John Muir Medical Center - Walnut Creek Campus		Exploratory abdominal surgery (laparotomy); Gastric surgery; Hip prosthesis
Kaiser Foundation Hospital - Antioch	Colon surgery	
Fresno		
Community Regional Medical Center		Spinal fusion
Fresno Heart and Surgical Hospital	Bile duct, liver or pancreatic surgery; Small bowel surgery	
Kaiser Foundation Hospital - Fresno		Colon surgery; Spinal fusion
Saint Agnes Medical Center		Knee prosthesis
Los Angeles		
Adventist Health Glendale	Colon surgery	
Adventist Health White Memorial	Spinal fusion	
Antelope Valley Hospital	Cesarean section; Colon surgery	
California Hospital Medical Center - Los Angeles		Gallbladder surgery; Gastric surgery
Cedars-Sinai Medical Center	Cesarean section	Colon surgery; Exploratory abdominal surgery (laparotomy); Open reduction of fracture
City of Hope Helford Clinical Research Hospital	Rectal surgery; Small bowel surgery	
Henry Mayo Newhall Hospital		Cesarean section
Kaiser Foundation Hospital - Downey	Spinal fusion	
Kaiser Foundation Hospital - West LA	Small bowel surgery	
Kaiser Foundation Hospital - Baldwin Park		Gallbladder surgery

Appendix C. California Hospitals with Surgical Site Infection Incidence Better or Worse than National Baseline, 2022

Hospitals by County	Better	Worse
Kaiser Foundation Hospital - South Bay		Gallbladder surgery
Keck Hospital of USC		Kidney transplant
LAC+USC Medical Center	Colon surgery; Open reduction of fracture	
MemorialCare Long Beach Medical Center		Bile duct, liver, or pancreatic surgery
Monterey Park Hospital		Colon surgery
Northridge Hospital Medical Center		Open reduction of fracture
PIH Health Good Samaritan Hospital		Colon surgery
Pomona Valley Hospital Medical Center	Colon surgery	
Providence Holy Cross Medical Center	Colon surgery; Open reduction of fracture	
Providence Saint Joseph Medical Center	Small bowel surgery	
Saint John's Health Center	Colon surgery; Hip prosthesis	
Torrance Memorial Medical Center	Spinal fusion	
USC Arcadia Hospital		Laminectomy
West Hills Hospital & Medical Center		Spinal fusion
Marin		
Kaiser Foundation Hospital - San Rafael		Hip prosthesis
Monterey		
Community Hospital of the Monterey Peninsula		Hip prosthesis
Nevada		
Sierra Nevada Memorial Hospital		Knee prosthesis
Orange		
Fountain Valley Regional Hospital and Medical Center		Gallbladder surgery; Spinal fusion
Hoag Memorial Hospital Presbyterian		Bile duct, liver, or pancreatic surgery
Kaiser Foundation Hospital - Orange County - Anaheim		Bile duct, liver, or pancreatic surgery
Kaiser Foundation Hospital - Orange County - Irvine		Colon surgery; Small bowel surgery

Appendix C. California Hospitals with Surgical Site Infection Incidence Better or Worse than National Baseline, 2022

Hospitals by County	Better	Worse
MemorialCare Orange Coast Medical Center		Spinal fusion
Providence Mission Hospital		Bile duct, liver, or pancreatic surgery
Providence St. Joseph Hospital	Laminectomy; Spinal fusion	
University of California Irvine Medical Center	Bile duct, liver, or pancreatic surgery; Small bowel surgery	Gastric surgery
Placer		
Kaiser Foundation Hospital - Roseville		Colon surgery; Gastric surgery
Riverside		
Corona Regional Medical Center		Cesarean section
Desert Regional Medical Center	Colon surgery	
Eisenhower Medical Center		Colon surgery; Open reduction of fracture
Riverside Community Hospital		Exploratory abdominal surgery (laparotomy)
Riverside University Health System - Medical Center	Colon surgery	
San Geronio Memorial Hospital		Gallbladder surgery
Southwest Healthcare Inland Valley Hospital	Small bowel surgery	
Sacramento		
Kaiser Foundation Hospital - Sacramento	Spinal fusion	Open reduction of fracture
Mercy General Hospital	Coronary bypass, chest, and donor incisions	
Sutter Medical Center, Sacramento	Cesarean section; Coronary bypass, chest, and donor incisions	
University of California Davis Medical Center	Cesarean section; Open reduction of fracture	Exploratory abdominal surgery (laparotomy)
San Bernardino		
Kaiser Foundation Hospital Fontana		Open reduction of fracture
Loma Linda University Medical Center East Campus Hospital		Spinal fusion
Providence St. Mary Medical Center		Spinal fusion
San Antonio Regional Hospital		Hip prosthesis

Appendix C. California Hospitals with Surgical Site Infection Incidence Better or Worse than National Baseline, 2022

Hospitals by County	Better	Worse
San Diego		
Kaiser Foundation Hospital - Zion		Small bowel surgery
Palomar Medical Center Poway		Knee prosthesis
Scripps Green Hospital	Hip prosthesis	Spinal fusion
Scripps Memorial Hospital - Encinitas		Small bowel surgery
Scripps Memorial Hospital - La Jolla		Hip prosthesis
Scripps Mercy Hospital	Small bowel surgery	Colon surgery
Sharp Mary Birch Hospital for Women and Newborns		Cesarean section
Sharp Memorial Hospital	Rectal surgery	
UC San Diego Health La Jolla - Jacobs Medical Center & Sulpizio Cardiovascular Center	Cesarean section; Colon surgery; Hip prosthesis	Exploratory abdominal surgery (laparotomy); Spinal fusion
San Francisco		
California Pacific Medical Center - Van Ness Campus	Bile duct, liver, or pancreatic surgery; Colon surgery	
Priscilla Chan and Mark Zuckerberg San Francisco General Hospital and Trauma Center	Open reduction of fracture	
UCSF Medical Center	Exploratory abdominal surgery (laparotomy)	
UCSF Medical Center at Mission Bay	Hysterectomy, abdominal	
San Joaquin		
Dameron Hospital		Gastric surgery
San Joaquin General Hospital		Spinal fusion
St. Joseph's Medical Center of Stockton		Coronary bypass, chest, and donor incisions
San Luis Obispo		
Tenet Health Central Coast Twin Cities Community Hospital		Hip prosthesis
Santa Barbara		
Lompoc Valley Medical Center		Colon surgery
Marian Regional Medical Center		Spinal fusion
Santa Clara		
Kaiser Foundation Hospital - Santa Clara	Colon surgery	Hip prosthesis
O'Connor Hospital		Colon surgery

Appendix C. California Hospitals with Surgical Site Infection Incidence Better or Worse than National Baseline, 2022

Hospitals by County	Better	Worse
Santa Clara Valley Medical Center	Open reduction of fracture	
Stanford Health Care	Colon surgery; Exploratory abdominal surgery (laparotomy); Hysterectomy, abdominal	
Solano		
Kaiser Foundation Hospital & Rehab Center - Vallejo		Exploratory abdominal surgery (laparotomy)
Sonoma		
Providence Santa Rosa Memorial Hospital		Open reduction of fracture
Stanislaus		
Emanuel Medical Center		Colon surgery
Kaiser Foundation Hospital Modesto		Cesarean section
Memorial Medical Center		Colon surgery
Tulare		
Kaweah Health Medical Center	Exploratory abdominal surgery (laparotomy)	
Tuolumne		
Adventist Health Sonora		Colon surgery
Yolo		
Woodland Memorial Hospital		Hip prosthesis

Appendix D. California Hospitals that Participated and Submitted Complete Validation Data for the CDPH 2022 Internal HAI Data Validation (★)

Hospitals by County	Participant
Alameda	
Alameda Hospital	
Alta Bates Summit Medical Center - Summit Campus	★
Alta Bates Summit Medical Center-Herrick Campus	★
Eden Medical Center	★
Highland Hospital	
Kaiser Foundation Hospital - Fremont	★
Kaiser Foundation Hospital - Oakland/Richmond	★
Kaiser Foundation Hospital - San Leandro	★
Kindred Hospital - San Francisco Bay Area	★
San Leandro Hospital	
St Rose Hospital	★
Stanford Health Care Tri-Valley	★
UCSF Benioff Children's Hospital Oakland	
Washington Hospital	★
Amador	
Sutter Amador Hospital	★
Butte	
Enloe Medical Center - Cohasset	★
Enloe Rehabilitation Center	
Orchard Hospital	
Oroville Hospital	
Calveras	
Mark Twain Medical Center	
Colusa	
Colusa Medical Center	
Contra Costa	
Contra Costa Regional Medical Center	
John Muir Medical Center-Concord Campus	★
John Muir Medical Center-Walnut Creek Campus	★
Kaiser Foundation Hospital - Antioch	★
Kaiser Foundation Hospital - Richmond Campus	★
Kaiser Foundation Hospital - Walnut Creek	★
San Ramon Regional Medical Center	
Sutter Delta Medical Center	★
Del Norte	
Sutter Coast Hospital	★
El Dorado	

Appendix D. California Hospitals that Participated and Submitted Complete Validation Data for the CDPH 2022 Internal HAI Data Validation (★)

Hospitals by County	Participant
Barton Memorial Hospital	
Marshall Medical Center	★
Fresno	
Adventist Health Reedley	★
Adventist Health Selma	★
Clovis Community Medical Center	★
Coalinga Regional Medical Center	
Community Regional Medical Center	★
Fresno Heart and Surgical Hospital	★
Fresno Surgical Hospital	
Kaiser Foundation Hospital - Fresno	★
Saint Agnes Medical Center	
San Joaquin Valley Rehabilitation Hospital	
Glenn	
Glenn Medical Center	★
Humboldt	
Jerold Phelps Community Hospital	
Mad River Community Hospital	★
Providence Redwood Memorial Hospital	
Providence St. Joseph Hospital	
The General Hospital	
Imperial	
El Centro Regional Medical Center	★
Pioneers Memorial Healthcare District	★
Inyo	
Northern Inyo Hospital	★
Southern Inyo Hospital	
Kern	
Adventist Health Bakersfield	★
Adventist Health Delano	★
Adventist Health Tehachapi Valley	★
Bakersfield Heart Hospital	
Bakersfield Memorial Hospital	★
Encompass Health Rehabilitation Hospital of Bakersfield	
Good Samaritan Hospital	
Kern Medical Center	★
Kern Valley Healthcare District	★
Mercy Hospital	
Mercy Southwest Hospital	

Appendix D. California Hospitals that Participated and Submitted Complete Validation Data for the CDPH 2022 Internal HAI Data Validation (★)

Hospitals by County	Participant
Ridgecrest Regional Hospital	
Kings	
Adventist Health Hanford	★
Lake	
Adventist Health Clearlake	
Sutter Lakeside Hospital	★
Lassen	
Banner Lassen Medical Center	
Los Angeles	
Adventist Health Glendale	★
Adventist Health White Memorial	
Alhambra Hospital Medical Center	★
Antelope Valley Hospital	★
Barlow Respiratory Hospital	
Beverly Hospital	
California Hospital Medical Center - Los Angeles	★
California Rehabilitation Institute, LLC.	★
Casa Colina Hospital	★
Casa Colina Hospital-Rehab	
Catalina Island Medical Center	★
Cedars-Sinai Marina Del Rey Hospital	
Cedars-Sinai Medical Center	★
Centinela Hospital Medical Center	★
Children's Hospital Los Angeles	
City of Hope Helford Clinical Research Hospital	★
Coast Plaza Hospital	★
College Medical Center	
Community Hospital of Huntington Park	★
DOCS Surgical Hospital	★
East Los Angeles Doctors Hospital	★
Emanate Health Foothill Presbyterian Hospital	
Emanate Health Inter-Community Hospital	
Emanate Health Queen of The Valley Hospital	
Encino Hospital Medical Center	
Garfield Medical Center	
Glendale Memorial Hospital and Health Center	
Greater El Monte Community Hospital	
Henry Mayo Newhall Hospital	★
Hollywood Presbyterian Medical Center	

Appendix D. California Hospitals that Participated and Submitted Complete Validation Data for the CDPH 2022 Internal HAI Data Validation (★)

Hospitals by County	Participant
Huntington Hospital	★
Kaiser Foundation Hospital - Baldwin Park	★
Kaiser Foundation Hospital - Los Angeles	★
Kaiser Foundation Hospital - Panorama City	★
Kaiser Foundation Hospital - South Bay	★
Kaiser Foundation Hospital - Woodland Hills	★
Kaiser Foundation Hospital-Downey	★
Kaiser Foundation Hospital-West LA	★
Keck Hospital of USC	★
Kindred Hospital - La Mirada	★
Kindred Hospital - Los Angeles	★
Kindred Hospital - San Gabriel Valley	★
Kindred Hospital Baldwin Park	★
Kindred Hospital Paramount	★
Kindred Hospital South Bay	★
L.A. Downtown Medical Center	
LAC/Harbor UCLA Medical Center	
LAC/Olive View-UCLA Medical Center	
LAC/Rancho Los Amigos National Rehabilitation Center	★
LAC+USC Medical Center	
Lakewood Regional Medical Center	
Los Angeles Community Hospital	
Martin Luther King, Jr. Community Hospital	
Memorial Hospital of Gardena	★
MemorialCare Long Beach Medical Center	★
MemorialCare Miller Children's & Women's Hospital Long Beach	★
Mission Community Hospital	★
Monrovia Memorial Hospital	★
Monterey Park Hospital	★
Northridge Hospital Medical Center	★
Norwalk Community Hospital	
Pacific Gardens Medical Center	
Pacifica Hospital of The Valley	★
Palmdale Regional Medical Center	★
PIH Health Downey Hospital	★
PIH Health Good Samaritan Hospital	★
PIH Health Whittier Hospital	★
Pomona Valley Hospital Medical Center	★
Providence Cedars-Sinai Tarzana Medical Center	★

Appendix D. California Hospitals that Participated and Submitted Complete Validation Data for the CDPH 2022 Internal HAI Data Validation (★)

Hospitals by County	Participant
Providence Holy Cross Medical Center	★
Providence Little Company of Mary Medical Center San Pedro	★
Providence Little Company of Mary Medical Center Torrance	★
Providence Saint Joseph Medical Center	★
Ronald Reagan UCLA Medical Center	
Saint John's Health Center	★
San Dimas Community Hospital	
San Gabriel Valley Medical Center	
Santa Monica - UCLA Medical Center and Orthopaedic Hospital	
Sherman Oaks Hospital	
Southern California Hospital at Culver City	
Southern California Hospital at Hollywood	
St. Francis Medical Center	★
St. Mary Medical Center	★
Torrance Memorial Medical Center	★
USC Arcadia Hospital	★
USC Kenneth Norris Jr. Cancer Hospital	★
USC Verdugo Hills Hospital	★
Valley Presbyterian Hospital	
West Covina Medical Center	
West Hills Hospital & Medical Center	
Whittier Hospital Medical Center	
Madera	
Madera Community Hospital	★
Valley Children's Hospital	★
Marin	
Kaiser Foundation Hospital - San Rafael	★
Kentfield Hospital	
Marinhealth Medical Center	★
Novato Community Hospital	★
Mariposa	
John C. Fremont Healthcare District	
Mendocino	
Adventist Health Howard Memorial	★
Adventist Health Mendocino Coast	
Adventist Health Ukiah Valley	★
Merced	
Memorial Hospital Los Banos	★
Mercy Medical Center	★

Appendix D. California Hospitals that Participated and Submitted Complete Validation Data for the CDPH 2022 Internal HAI Data Validation (★)

Hospitals by County	Participant
Modoc	
Modoc Medical Center	
Surprise Valley Community Hospital	
Mono	
Mammoth Hospital	★
Monterey	
Community Hospital of The Monterey Peninsula	★
George L. Mee Memorial Hospital	★
Natividad Medical Center	
Salinas Valley Health Medical Center	★
Napa	
Adventist Health St. Helena	★
Providence Queen of The Valley Medical Center	
Nevada	
Sierra Nevada Memorial Hospital	★
Tahoe Forest Hospital	
Orange	
AHMC Anaheim Regional Medical Center	
Anaheim Community Hospital, LLC.	N/A
Anaheim Global Medical Center	
Chapman Global Medical Center	
Children's Hospital At Mission	★
Children's Hospital of Orange County	★
College Hospital Costa Mesa	
Encompass Health Rehabilitation Hospital of Tustin	★
Foothill Regional Medical Center	
Fountain Valley Regional Hospital and Medical Center	
Garden Grove Hospital and Medical Center	
Healthbridge Children's Hospital - Orange	★
Hoag Hospital Irvine	★
Hoag Memorial Hospital Presbyterian	★
Hoag Orthopedic Institute	★
Huntington Beach Hospital	★
Kaiser Foundation Hospital - Orange County - Anaheim	★
Kaiser Foundation Hospital - Orange County - Irvine	★
Kindred Hospital - Santa Ana	★
Kindred Hospital Brea	★
Kindred Hospital Westminster	★
La Palma Intercommunity Hospital	

Appendix D. California Hospitals that Participated and Submitted Complete Validation Data for the CDPH 2022 Internal HAI Data Validation (★)

Hospitals by County	Participant
Los Alamitos Medical Center	
MemorialCare Orange Coast Medical Center	★
MemorialCare Saddleback Medical Center	★
Orange County Global Medical Center	
Placentia Linda Hospital	
Providence Mission Hospital	★
Providence Mission Hospital - Laguna Beach	★
Providence St. Joseph Hospital	★
Providence St. Jude Medical Center	★
South Coast Global Medical Center	
University of California Irvine Medical Center	★
West Anaheim Medical Center	
Placer	
Kaiser Foundation Hospital - Roseville	★
Sutter Auburn Faith Hospital	★
Sutter Roseville Medical Center	★
Plumas	
Eastern Plumas Hospital-Portola Campus	
Plumas District Hospital	
Seneca District Hospital	
Riverside	
Corona Regional Medical Center	
Desert Regional Medical Center	
Doctors Hospital of Riverside	★
Eisenhower Medical Center	★
Encompass Health Rehabilitation Hospital of Murrieta	★
Hemet Global Medical Center	★
John F. Kennedy Memorial Hospital	
Kaiser Foundation Hospital, Riverside	★
Kaiser Foundation Hospital-Moreno Valley	★
Kindred Hospital Riverside	★
Loma Linda University Medical Center - Murrieta	★
Menifee Global Medical Center	★
Palo Verde Hospital	★
Riverside Community Hospital	
Riverside University Health System - Medical Center	
San Geronio Memorial Hospital	★
Southwest Healthcare Inland Valley Hospital	
Southwest Healthcare Rancho Springs Hospital	

Appendix D. California Hospitals that Participated and Submitted Complete Validation Data for the CDPH 2022 Internal HAI Data Validation (★)

Hospitals by County	Participant
Temecula Valley Hospital	★
Vibra Rehabilitation Hospital of Rancho Mirage	
Sacramento	
Kaiser Foundation Hospital - Sacramento	★
Kaiser Foundation Hospital - South Sacramento	★
Mercy General Hospital	★
Mercy Hospital of Folsom	★
Mercy San Juan Medical Center	★
Methodist Hospital of Sacramento	★
Shriners Hospitals for Children Northern California	★
Sutter Medical Center, Sacramento	★
University of California Davis Medical Center	★
Vibra Hospital of Sacramento	★
San Benito	
Hazel Hawkins Memorial Hospital	★
San Bernardino	
Arrowhead Regional Medical Center	★
Ballard Rehabilitation Hospital	
Barstow Community Hospital	
Bear Valley Community Hospital	★
Chino Valley Medical Center	
Colorado River Medical Center	
Community Hospital of San Bernardino	★
Desert Valley Hospital	
Hi-Desert Medical Center	
Kaiser Foundation Hospital Fontana	★
Kaiser Foundation Hospital- Ontario	★
Kindred Hospital Ontario	★
Kindred Hospital Rancho	★
Loma Linda University Children's Hospital	★
Loma Linda University Medical Center	★
Loma Linda University Medical Center East Campus Hospital	★
Loma Linda University Surgical Hospital	★
Montclair Hospital Medical Center	
Mountains Community Hospital	
Providence St. Mary Medical Center	★
Redlands Community Hospital	★
San Antonio Regional Hospital	★
St. Bernardine Medical Center	

Appendix D. California Hospitals that Participated and Submitted Complete Validation Data for the CDPH 2022 Internal HAI Data Validation (★)

Hospitals by County	Participant
Totally Kids Rehabilitation Hospital	
Victor Valley Global Medical Center	
San Diego	
Alvarado Hospital Medical Center	
Grossmont Hospital	★
Kaiser Foundation Hospital - San Diego	★
Kaiser Foundation Hospital - Zion	★
Kindred Hospital - San Diego	★
Palomar Medical Center	
Palomar Medical Center Poway	
Paradise Valley Hospital	
Rady Children's Hospital - San Diego	★
Scripps Green Hospital	
Scripps Memorial Hospital - Encinitas	
Scripps Memorial Hospital - La Jolla	
Scripps Mercy Hospital	
Scripps Mercy Hospital Chula Vista	
Select Specialty Hospital - San Diego	
Sharp Chula Vista Medical Center	★
Sharp Coronado Hospital and Healthcare Center	★
Sharp Mary Birch Hospital for Women and Newborns	★
Sharp Memorial Hospital	★
Tri-City Medical Center	
UC San Diego Health Hillcrest - Hillcrest Medical Center	
UC San Diego Health La Jolla - Jacobs Medical Center & Sulpizio Cardiovascular Center	
San Francisco	
California Pacific Medical Center - Davies Campus	★
California Pacific Medical Center - Mission Bernal Campus and Orthopedic Institute	★
California Pacific Medical Center - Van Ness Campus	★
Chinese Hospital	★
Kaiser Foundation Hospital - San Francisco	★
Kentfield Hospital San Francisco	★
Laguna Honda Hospital & Rehabilitation Center	★
Priscilla Chan and Mark Zuckerberg San Francisco General Hospital and Trauma Center	★
Saint Francis Memorial Hospital	★
St. Mary's Medical Center	★
UCSF Medical Center	
UCSF Medical Center at Mission Bay	
UCSF Medical Center at Mount Zion	

Appendix D. California Hospitals that Participated and Submitted Complete Validation Data for the CDPH 2022 Internal HAI Data Validation (★)

Hospitals by County	Participant
San Joaquin	
Adventist Health Lodi Memorial	★
Dameron Hospital	★
Doctors Hospital of Manteca	
Kaiser Foundation Hospital Manteca	★
San Joaquin General Hospital	★
St. Joseph's Medical Center of Stockton	★
Sutter Tracy Community Hospital	★
San Luis Obispo	
French Hospital Medical Center	★
Marian Regional Medical Center, Arroyo Grande	★
Tenet Health Central Coast Sierra Vista Regional Medical Center	
Tenet Health Central Coast Twin Cities Community Hospital	
San Mateo	
AHMC Seton Medical Center	★
Kaiser Foundation Hospital - Redwood City	★
Kaiser Foundation Hospital - South San Francisco	★
Mills-Peninsula Medical Center	★
San Mateo Medical Center	★
Sequoia Hospital	★
Santa Barbara	
Goleta Valley Cottage Hospital	
Lompoc Valley Medical Center	★
Marian Regional Medical Center	★
Santa Barbara Cottage Hospital	★
Santa Ynez Valley Cottage Hospital	
Santa Clara	
El Camino Health	★
El Camino Health Los Gatos	★
Good Samaritan Hospital	
Kaiser Foundation Hospital-San Jose	★
Kaiser Foundation Hospital-Santa Clara	★
Lucile Salter Packard Children's Hospital Stanford	★
Mission Oaks Hospital	
O'Connor Hospital	★
Regional Medical Center of San Jose	
Santa Clara Valley Medical Center	★
St. Louise Regional Hospital	★
Stanford Health Care	★

Appendix D. California Hospitals that Participated and Submitted Complete Validation Data for the CDPH 2022 Internal HAI Data Validation (★)

Hospitals by County	Participant
Santa Cruz	
Dominican Hospital	★
Sutter Maternity & Surgery Center of Santa Cruz	★
Watsonville Community Hospital	★
Shasta	
Mayers Memorial Hospital	★
Mercy Medical Center Redding	★
Patients' Hospital of Redding	
Shasta Regional Medical Center	
Vibra Hospital of Northern California	
Siskiyou	
Fairchild Medical Center	★
Mercy Medical Center Mt. Shasta	★
Solano	
Kaiser Foundation Hospital - Vacaville	★
Kaiser Foundation Hospital & Rehab Center - Vallejo	★
NorthBay Medical Center	
NorthBay Vacavalley Hospital	
Sutter Solano Medical Center	★
Sonoma	
Healdsburg Hospital	
Kaiser Foundation Hospital - Santa Rosa	★
Petaluma Valley Hospital	
Providence Santa Rosa Memorial Hospital	
Sonoma Specialty Hospital	
Sonoma Valley Hospital	★
Sutter Santa Rosa Regional Hospital	★
Stanislaus	
Central Valley Specialty Hospital	
Doctors Medical Center	★
Emanuel Medical Center	
Encompass Health Rehabilitation Hospital of Modesto	
Kaiser Foundation Hospital Modesto	★
Memorial Medical Center	★
Oak Valley Hospital District	★
Stanislaus Surgical Hospital	★
Sutter	
Sutter Surgical Hospital - North Valley	★
Tehama	

Appendix D. California Hospitals that Participated and Submitted Complete Validation Data for the CDPH 2022 Internal HAI Data Validation (★)

Hospitals by County	Participant
St. Elizabeth Community Hospital	★
Trinity	
Trinity Hospital	
Tulare	
Adventist Health Tulare	★
Kaweah Delta Medical Center, Rehabilitation Unit	
Kaweah Health Medical Center	★
Porterville Developmental Center	
Sierra View Medical Center	
Tuolumne	
Adventist Health Sonora	★
Ventura	
Adventist Health Simi Valley	
Community Memorial Hospital - San Buenaventura	
Los Robles Hospital & Medical Center	
Los Robles Hospital & Medical Center - East Campus	
Ojai Valley Community Hospital	
St John's Regional Medical Center	★
St. John's Hospital Camarillo	★
Thousand Oaks Surgical Hosp., A Campus of Los Robles Hosp. & Medical Ctr.	
Ventura County Medical Center	★
Ventura County Medical Center - Santa Paula Hospital	★
Yolo	
Sutter Davis Hospital	★
Woodland Memorial Hospital	★
Yuba	
Adventist Health and Rideout	★

Includes 399 of 400 facilities, one facility was excluded for only having one week's worth of NHSN data in the first quarter to validate due to beds being in suspension until 03/23/23 (i.e., Olympia Medical Center (OrgID:13245)). Anaheim Community Hospital, LLC. (orgid: 13990) not open at time of validation, opened after validation thus N/A.

Appendix E. Antimicrobial Stewardship Program Honor Roll Members

Gold

- Loma Linda University Children's Hospital
- St. Bernardine Medical Center
- St. John's Hospital Camarillo (formerly St. John's Pleasant Valley Hospital)
- St. John's Regional Medical Center
- UCI Health
- Veterans Affairs Palo Alto Health Care System (VAPAHCS)

Silver

- Adventist Health Lodi Memorial
- Eden Medical Center
- Foothill Regional Medical Center
- Kaiser Permanente Antioch Medical Center
- Kaiser Permanente Medical Center, Vacaville
- Loma Linda University Medical Center
- Martin Luther King Jr. Community Hospital
- Memorial Hospital Los Banos
- MemorialCare Saddleback Medical Center
- PIH Health Good Samaritan Hospital
- Providence Little Company of Mary Torrance
- Riverside Community Hospital
- San Antonio Regional Hospital
- San Geronio Memorial Hospital
- Sharp Grossmont Hospital
- Sierra Nevada Memorial Hospital
- Southern California Hospital at Culver City
- Southern California Hospitals in Hollywood
- St. Rose Hospital

Appendix E. Antimicrobial Stewardship Program Honor Roll Members

- Sutter Amador Hospital
- Sutter Auburn Faith Hospital
- Sutter Delta Medical Center
- University of California, San Diego Health
- USC Verdugo Hills Hospital

Bronze

- Alhambra Hospital Medical Center
- Community Hospital of the Monterey Peninsula
- Desert Valley Hospital
- Emanate Health - Foothill Presbyterian Hospital
- Emanate Health - Inter-community Hospital
- Emanate Health - Queen of the Valley Hospital
- Kaiser Foundation Hospital - Walnut Creek
- Kaiser Foundation Hospitals, Kaiser Permanente Redwood City Medical Center
- Kaiser Medical Center - San Rafael
- Kaiser Permanente Santa Rosa Medical Center
- Kaiser Permanente South San Francisco Medical Center
- Kindred Hospital Riverside
- Madera Community Hospital
- Memorial Medical Center
- Mercy Hospitals - Bakersfield
- Providence Little Co of Mary Medical Center, San Pedro
- Redlands Community Hospital
- Saint Francis Memorial Hospital
- San Gabriel Valley Medical Center
- Sutter Coast Hospital
- Sutter Solano Medical Center

Appendix E. Antimicrobial Stewardship Program Honor Roll Members

- University of California San Diego Health System
- West Hills Hospital & Medical Center
- Whittier Hospital Medical Center