



Adolescent Sexual and Reproductive Health, Santa Clara County, 2016



Adolescence is the developmental period from ages 10 to 19. During adolescence and into early adulthood, the brain undergoes the last major period of growth and reorganization, resulting in an increased need for stimulation and changes in social and emotional information processing. Adolescence is a time for youth to explore their identity and values. Often this occurs in the context of peer relationships though parents and other adult figures remain influential. Although the morbidity and mortality rates increase sharply from childhood through adolescence, most youth fare well. Adolescence is a critical time for establishing patterns for a positive adulthood - including an active role in one's reproductive and sexual health.

The Local and State Populations

	Santa Clara		California		County Ranking ¹¹		Santa Clara		California		County Ranking ¹¹
	N	%	N	%			N	%	N	%	
Total Population ¹	1,932,827	100.0	39,312,207	100.0	6	Adolescent Population ¹	246,072	100.0	5,364,386	100.0	6
Aged 10 - 14 years	123,916	6.4	2,562,715	6.5	27	Hispanic	89,165	36.2	2,737,969	51.0	31
Aged 15 - 17 years	72,835	3.8	1,613,291	4.1	37	African American	5,186	2.1	303,686	5.7	21
Aged 18 - 19 years	49,321	2.6	1,188,380	3.0	35	Asian	77,544	31.5	601,399	11.2	2
Uninsured ²	144,253	7.7	4,804,193	12.6	51	White	59,386	24.1	1,457,902	27.2	47
Public Health Insurance ²	483,314	25.8	13,098,930	34.3	58	Male	125,861	51.1	2,744,695	51.2	31
Single Head-of-Household ²	96,729	15.4	2,489,482	19.4	38	Female	120,211	48.9	2,619,691	48.8	26
Total Concentrated Poverty ²	167,211	9.0	11,199,174	29.5	42	Living in Foster Care ⁴	638	0.3	26,234	0.5	50
Youth Concentrated Poverty ²	9,829	27.1	365,187	45.6	39	Family PACT Providers ⁵	41	--	2,118	--	11
Unemployment Rate ²	--	4.4	--	5.5	45	Youth Family PACT Clients ⁵	5,262	--	152,474	--	6
Rural MSSAs ³	1	6.3	227	41.9	54	High School Dropout Rate ⁶	--	11.9	--	9.7	6

Notes: ¹Adolescent Population aged 10 – 19, age group percentages out of total pop., ethnicity and gender percentages out of adolescent pop. California Department of Finance. Demographic Research Unit. 2018. State and county population projections 2010-2060 [Report P-3]. Sacramento: California Department of Finance. January 2018. ²Estimated number of population with no health insurance, public health insurance; estimated number of households with male/female householder, no wife/husband present; estimated total pop. in areas of concentrated poverty; estimated 15 – 24 pop. in areas of concentrated poverty, percentage out of 15 – 24 pop.; unemployment rate. U.S. Census Bureau, American Community Survey (5-year estimates), 2012-2016, retrieved from American FactFinder - Census Bureau. ³Total rural and frontier MSSAs: Office of Statewide Health Planning & Development, Medical Study Service Areas, 2014, retrieved from: California Health and Human Services Open Data Portal - MSSA. ⁴PIT (Point in Time) estimate, July, 2016, youth ages 11-21; University of California at Berkeley, California Child Welfare Indicators Project (CCWIP) retrieved from: UC Berkeley California Child Welfare Indicators Project. ⁵Family PACT Production Files, FY 2015-16. Requested from: Office of Family Planning, Department of Health Care Services. Received on July 19, 2018. ⁶High School Cohort Drop Out Rate: 2015-2016. California Department of Education, retrieved from: CA Department of Education - Data Quest. ⁷Birth rate per 1,000 females aged 15-19. Percent of repeat births is percent of births to females aged 15 – 19 with 1-7 previous lives births. Birth Statistical Master File, 2016, California Department of Public Health, Center for Health Statistics and Informatics. ⁸Rate per 100,000 youth,. California Department of Public Health, STD Control Branch, rates by race, age and jurisdiction, retrieved from CDPH - STD Branch Data, 2016. ⁹Arrest counts 19 and under pop., out of 10-19 pop., rate per 100,000 youth. California Department of Justice, Office of the Attorney General, California Arrests Data File, 2016. retrieved from: CA DOJ - Crime Statistics Portal. ¹⁰Percent 9th graders reported high level of school connectedness; suicidal ideation; depression-related feelings in past year. WestEd Health and Human Development Department for California Department of Education, 2013-2015. retrieved from: KidsData.org. ¹¹County rankings determined by assigning rank of one to the largest value among counties and rank of 58 to smallest value. '--' = data not available; 's' = data suppressed; * = RSE between 30% and 49%

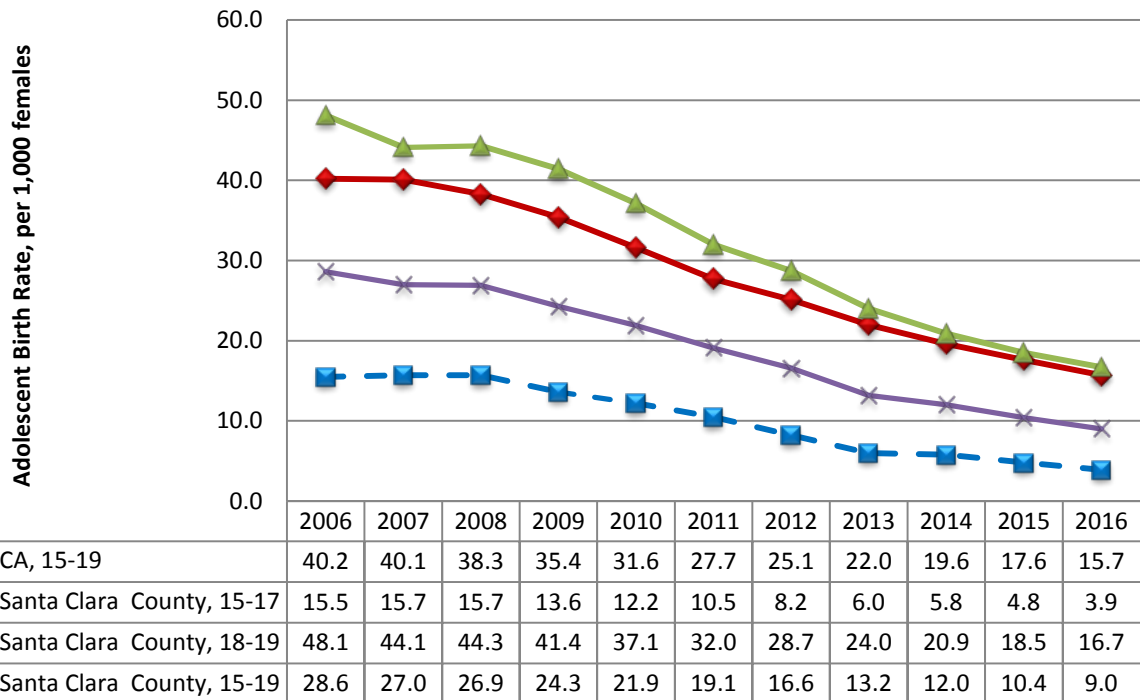
Further technical details available here: CDPH - Adolescent Health County Profiles.



Adolescent Sexual and Reproductive Health, Santa Clara County, 2016

	Geography		County Ranking ¹¹	Gender		Race and Ethnicity			
	Local	State		Female	Male	Hispanic	African American	Asian	White
Adolescent Behaviors and Outcomes									
Adolescent birth rate (aged 15-19) ^{1,7}	9.0	15.7	50	--	--	21.5	3.4*	1.2	1.4
Percent of repeat adolescent births (aged 15-19) ⁷	10.6	16.1	40	--	--	11.1	s	0.0	s
Chlamydia rate (aged 15 - 19) ⁸	944.7	1,311.3	44	1,575.8	342.4	1,401.9	2,808.5	258.7	671.4
Gonorrhea rate (aged 15 - 19) ⁸	117.9	229.1	12	119.0	116.8	172.7	828.4	23.8	47.3
Arrest rate (aged 10 - 19) ⁹	1,759.2	2,111.8	48	874.3	2,604.5	2,982.1	8,368.7	--	1,288.2
School Connectedness ¹⁰	s	44.5	--	s	s	--	--	--	--
Depression-related feelings ¹⁰	s	31.5	--	s	s	--	--	--	--
Suicidal Ideation ¹⁰	s	19.0	--	s	s	--	--	--	--

Santa Clara County Adolescent Birth Rate by Age Group, 2006 - 2016



Adolescent Births In Santa Clara County

- 539 adolescent births occurred in Santa Clara County in 2016, representing 2.5% of adolescent births in the state that year. 4.4% of CA females ages 15 – 19 lived in Santa Clara County in 2016.
- The adolescent birth rate has decreased 68.5% since 2006; the state decreased 61.0% over the same period.
- 28.4% of adolescent births in Santa Clara County were to foreign-born mothers. The state average was 19.8%.
- 85.3% of adolescent births in Santa Clara County were to mothers who reported a Hispanic ethnicity. The state average was 75.2%.
- 4.1% of adolescent births in Santa Clara County were to mothers who reported an Asian race. The state average was 1.7%.
- 21.2% of adolescent births in Santa Clara County occurred in areas of concentrated poverty. The state average was 55.2%.